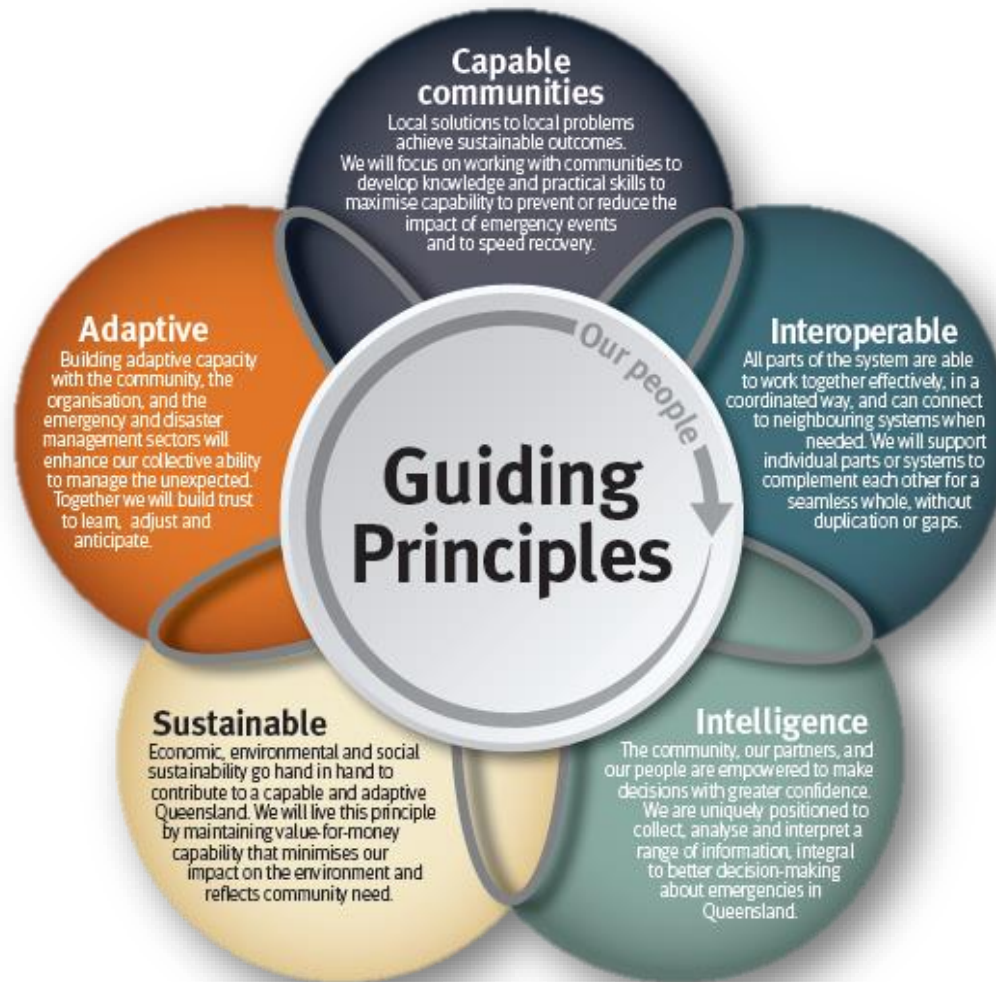




Our people in 2030



Our people @ the centre



Drivers of change

Social cohesion

Homelessness	low	↑
Single household	med	↑
Internal migration	high	↓
Acceptance	low	↓
Home ownership	med	↓

Trust

Media (47%)	low	↑
Government (48%)	low	↑
Business (56%)	med	↑
NGOs (57%)	med	↑
Employers (75%)	high	↑

Ageing population

Proportion of pop	low	↑
Health by global std	high	↑
Life expectancy	high	↑

Climate change

Action on TCFD	early	↑
Action on Paris 2030	slow	↑
Action on SDG	slow	↓
Cost of disasters	1.2%GDP	↑

Great Techxpectations

Internet speed (rank)	< ave	↓
Innovation (rank)	mod	—
Tech skills shortage	high	↑
Govt procurement	slow	—

Strategic capability

Capable communities

Interoperable

Intelligence

Sustainable

Adaptive

Communication & engagement

Capability integration

Strategic & operational intelligence

Trust

Innovation

Learning & growth

Collaboration

Information flow

Improvement mindset

EQ & leadership skills

Data literacy

Adaptability quotient

Strong future. Stronger together.