



bushfire&natural
HAZARDSCRC

THE AUSTRALIAN NATURAL DISASTER RESILIENCE INDEX

Melissa Parsons, Ian Reeve, James
McGregor, Phil Morley, Peter
Hastings, Richard Stayner, Sonya
Glavac, Judith McNeill, Graham
Marshall

EMV, NSW SES, NSW RFS, AFAC, DFES
WA, TAS FS, VIC CFA, MFB, TAS SES

University of New England, Armidale, NSW

End users

© BUSHFIRE AND NATURAL HAZARDS CRC 2017

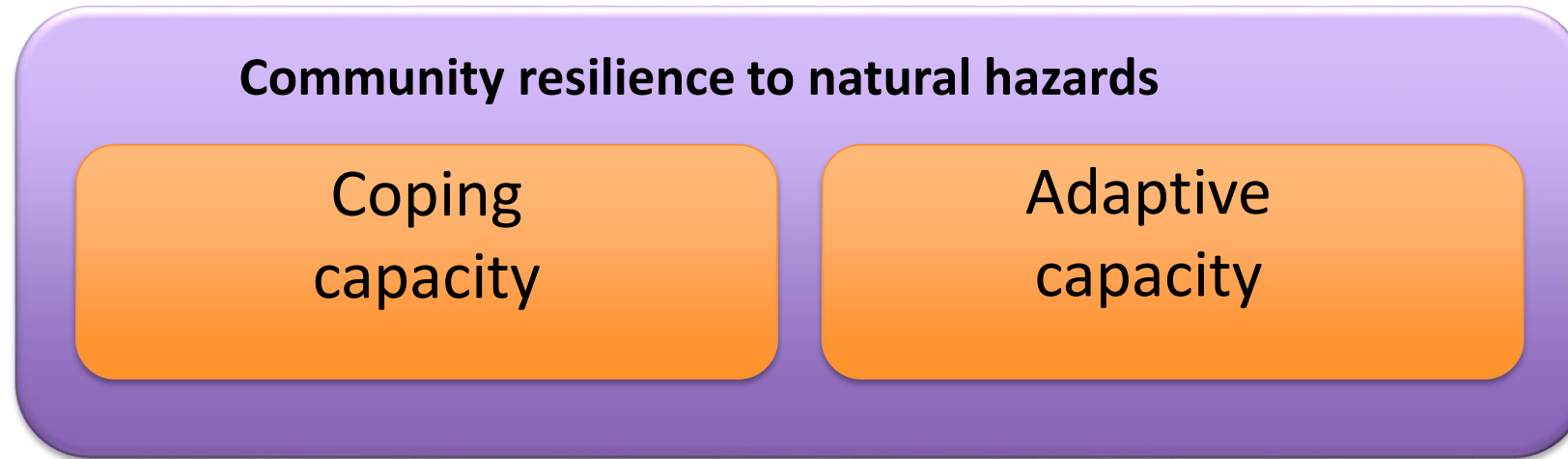


Australian Government
Department of Industry,
Innovation and Science

Business
Cooperative Research
Centres Programme

une
University of
New England

DESIGN OF THE INDEX - CAPACITIES



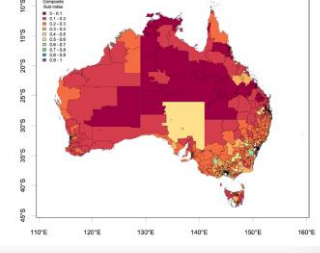
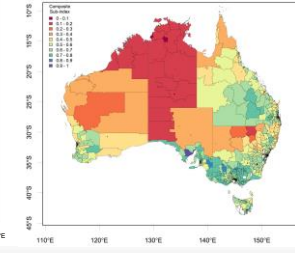
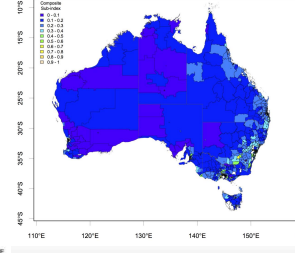
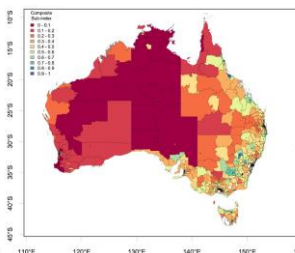
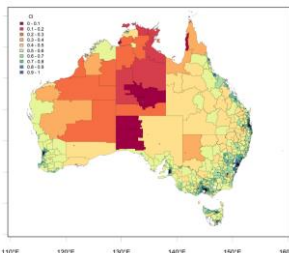
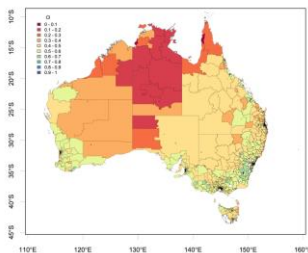
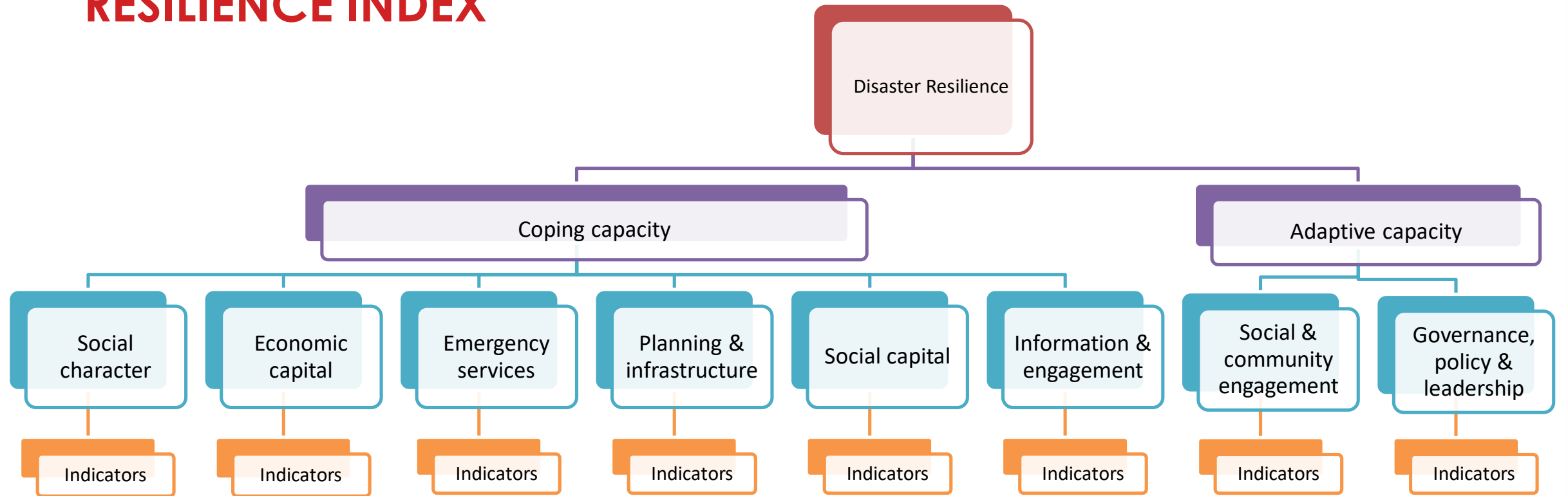
The means by which people or organizations use available resources and abilities to face adverse consequences that could lead to a disaster (UNISDR 2004)

Factors influencing the ability to prepare for, absorb and recover from a natural hazard event

The arrangements and processes that enable adjustment through learning, adaptation and transformation

The facilitation of adaptation by governance, institutional, management and social arrangements and processes.

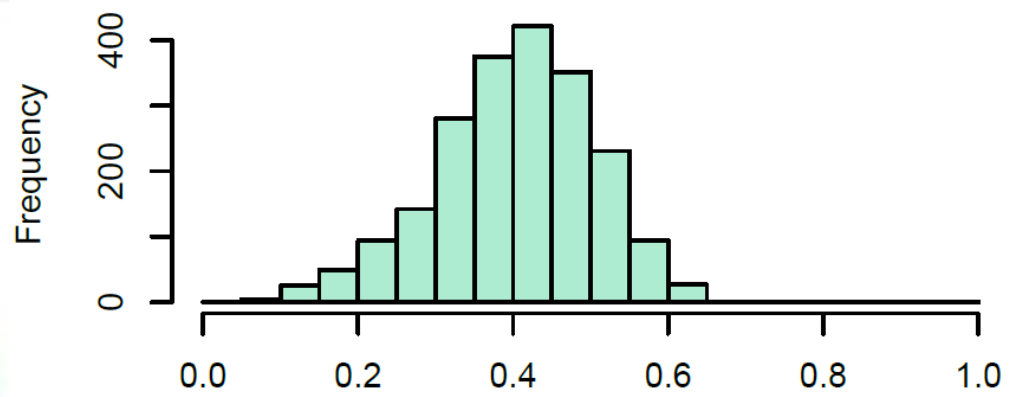
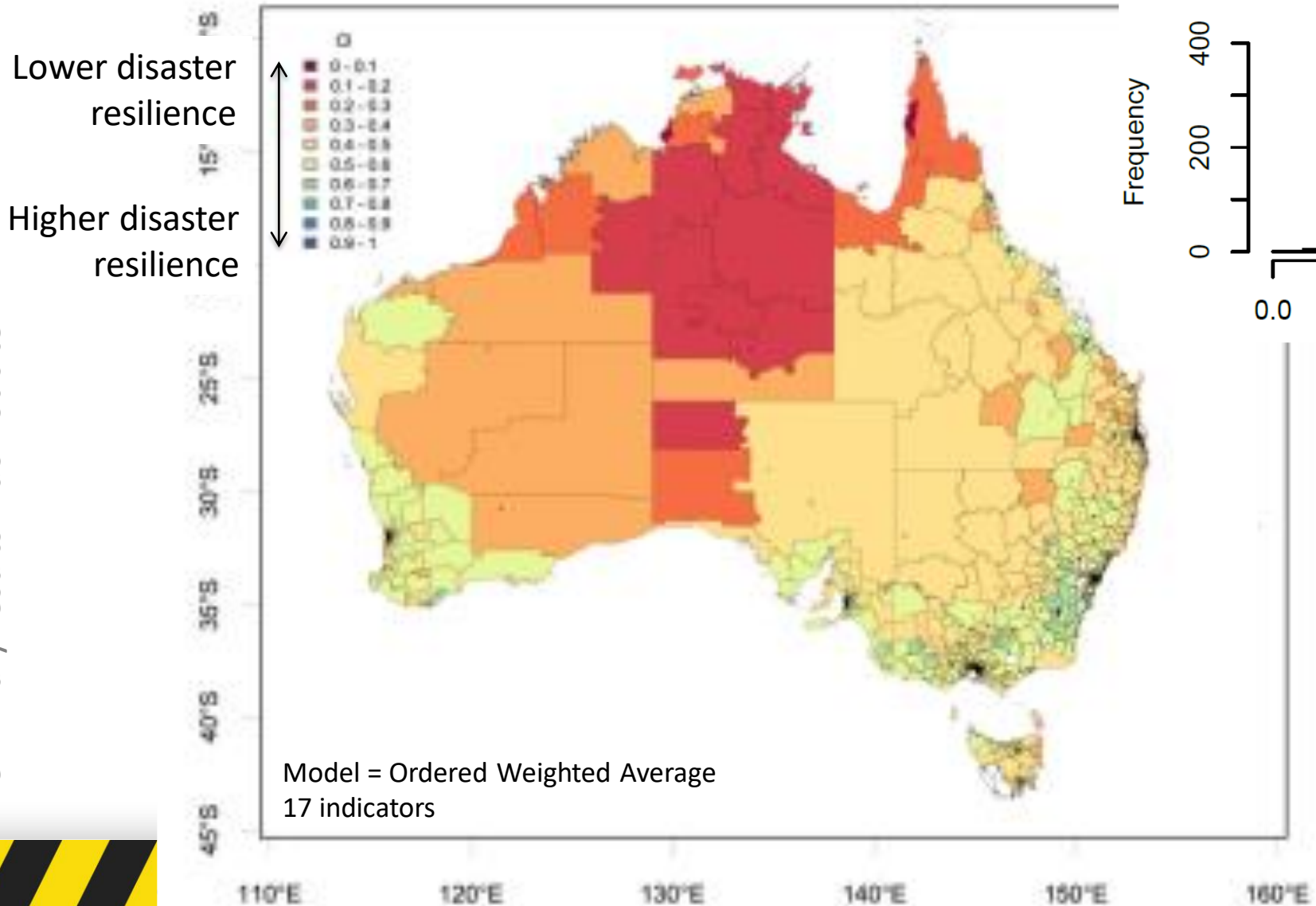
DESIGN OF THE AUSTRALIAN NATURAL DISASTER RESILIENCE INDEX



INDEX – SOCIAL CHARACTER THEME

The social factors that influence the capacity to prepare for and recover from a natural hazard event

Preliminary results – do not cite

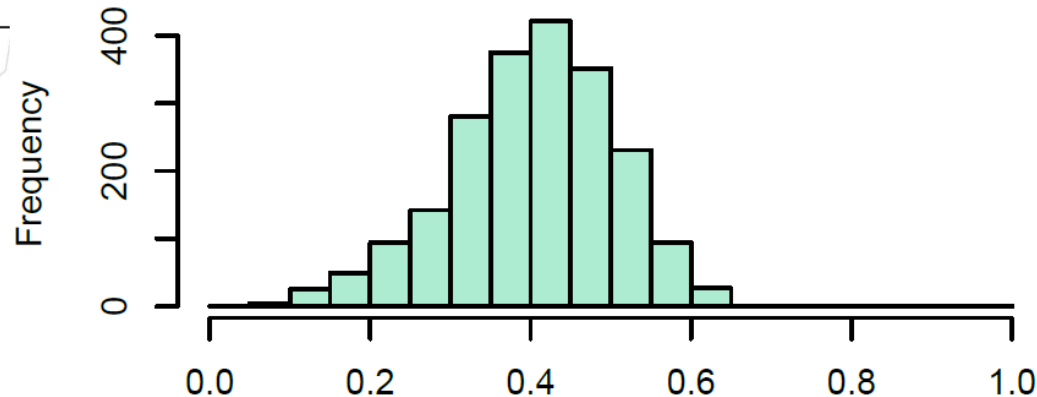
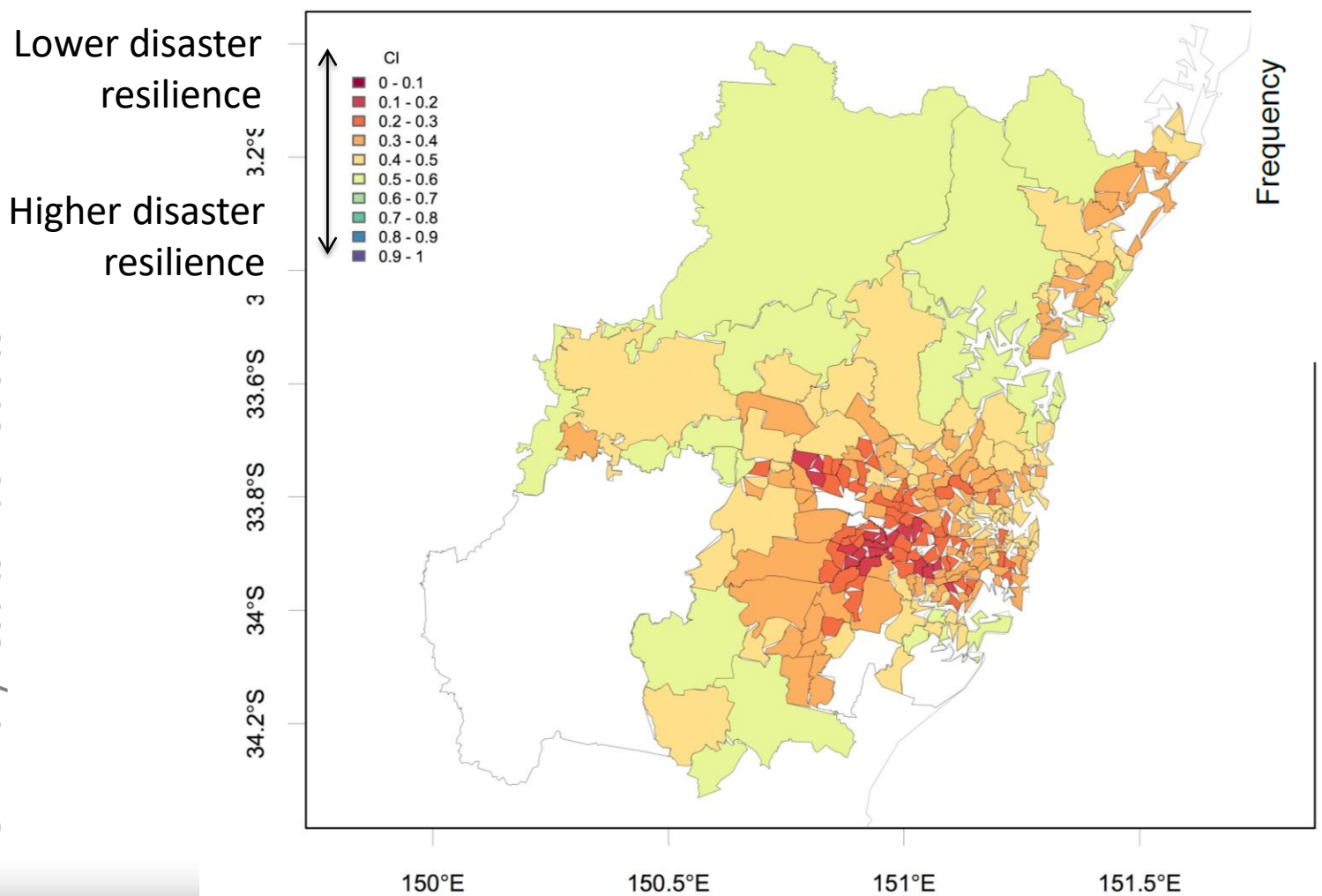


Based on 17 indicators of:
Migration
Language proficiency
Household & family composition
Need for assistance
Education
Employment

INDEX – SOCIAL CHARACTER THEME

The social factors that influence the capacity to prepare for and recover from a natural hazard event

Preliminary results – do not cite

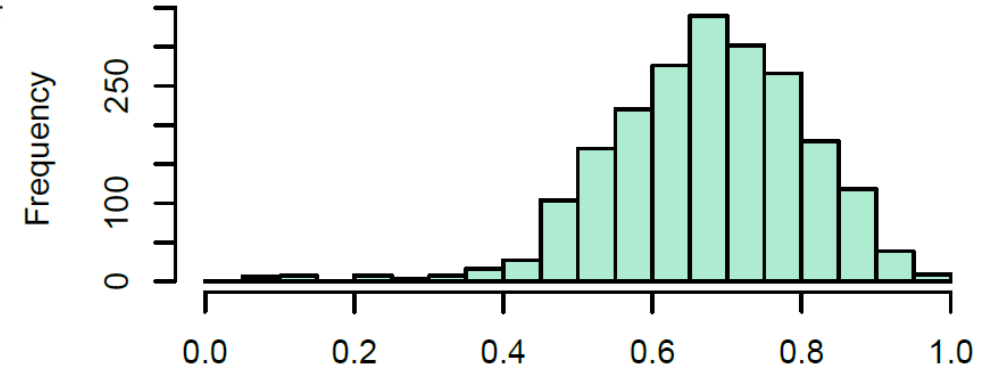
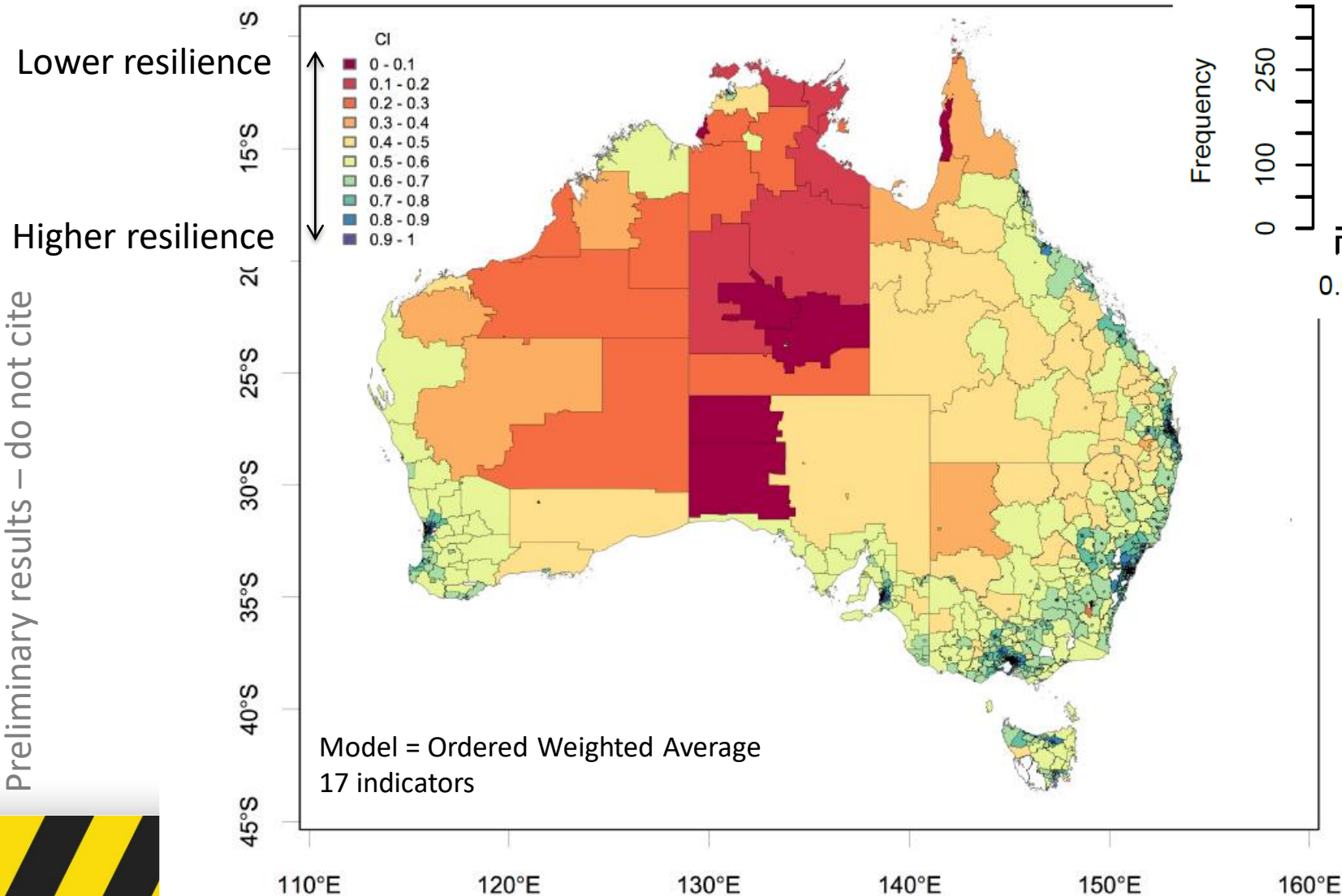


Based on 17 indicators of:

- Migration
- Language proficiency
- Household & family composition
- Need for assistance
- Education
- Employment

INDEX – ECONOMIC CAPITAL THEME

The economic factors that influence the capacity to prepare for and recover from a natural hazard event



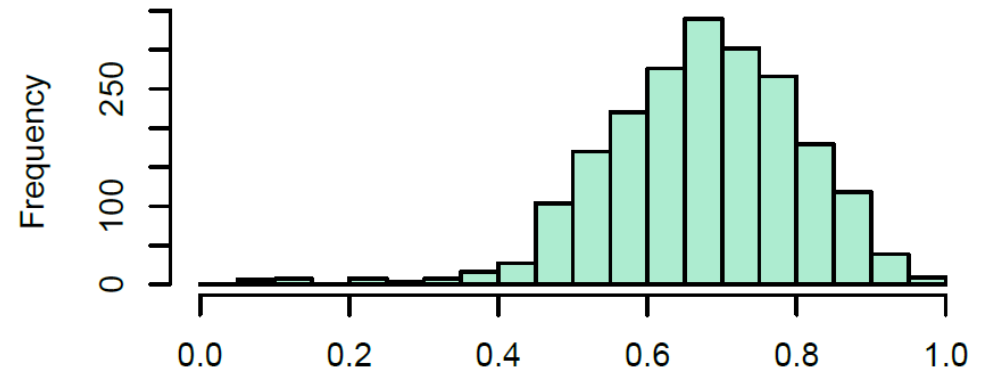
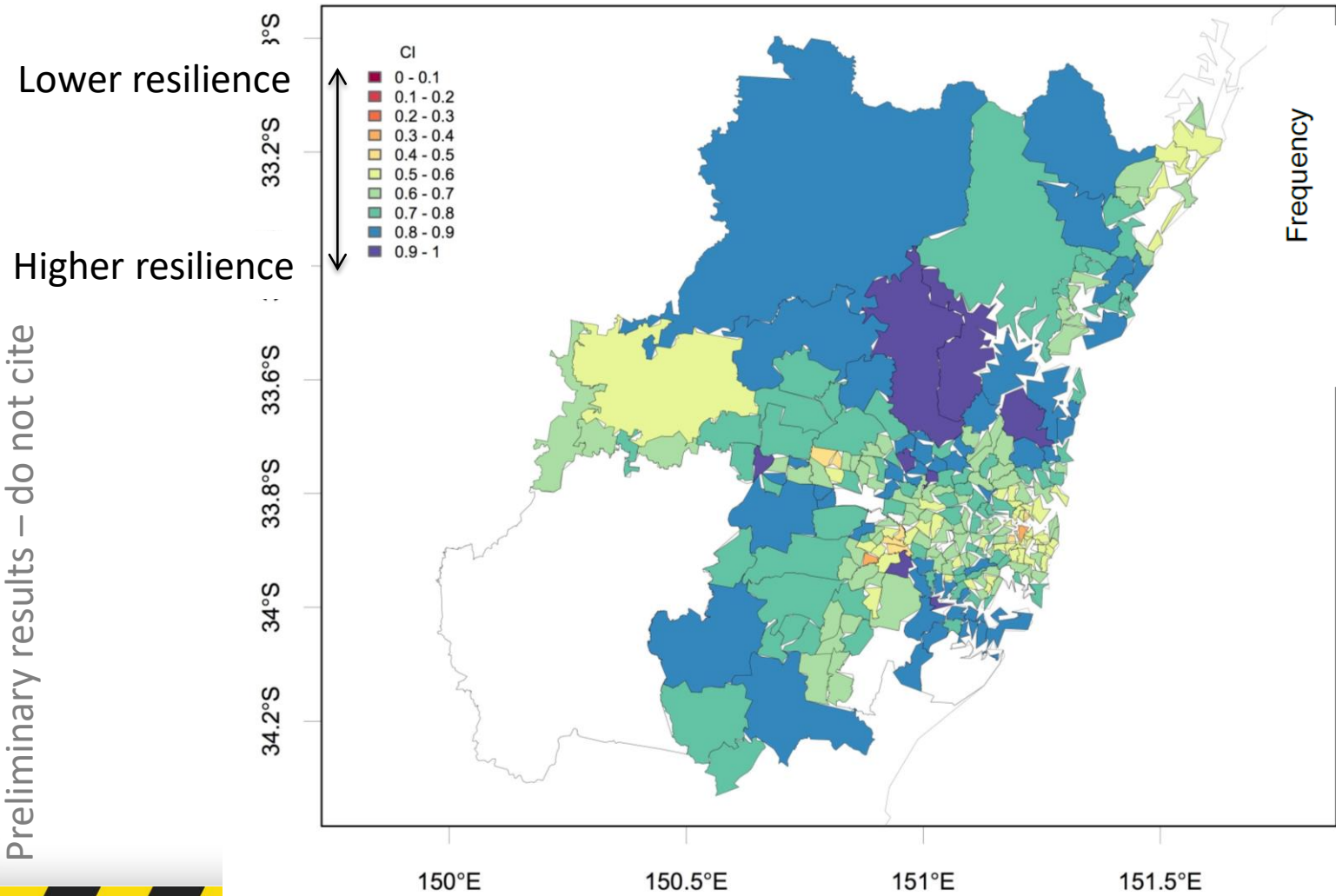
Based on 17 indicators of:

- Home ownership
- Income
- Economic diversity
- Business activity
- Economic inequality

Preliminary results – do not cite

INDEX – ECONOMIC CAPITAL THEME

The economic factors that influence the capacity to prepare for and recover from a natural hazard event



Based on 17 indicators of:

- Home ownership
- Income
- Economic diversity
- Business activity
- Economic inequality

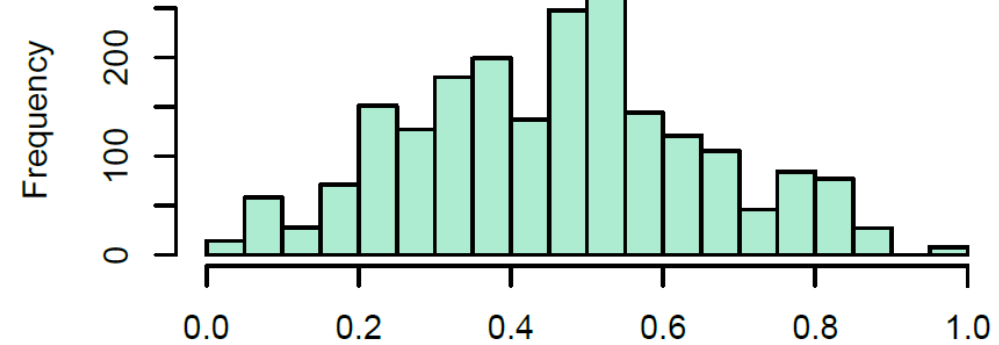
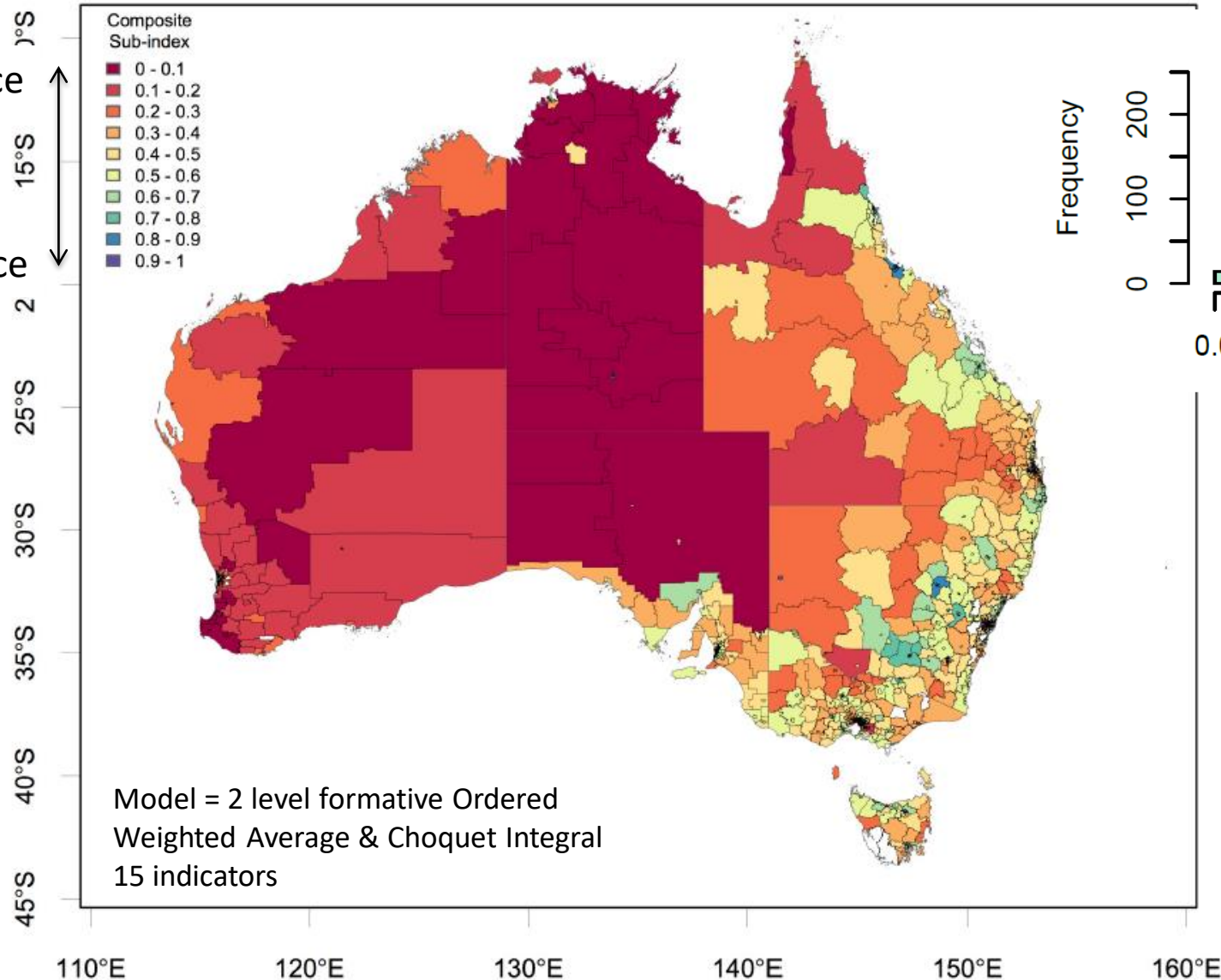
INDEX – EMERGENCY SERVICES THEME

The capacity and potential of emergency service and health resources to respond to natural hazard events

Lower resilience

Higher resilience

Preliminary results – do not cite

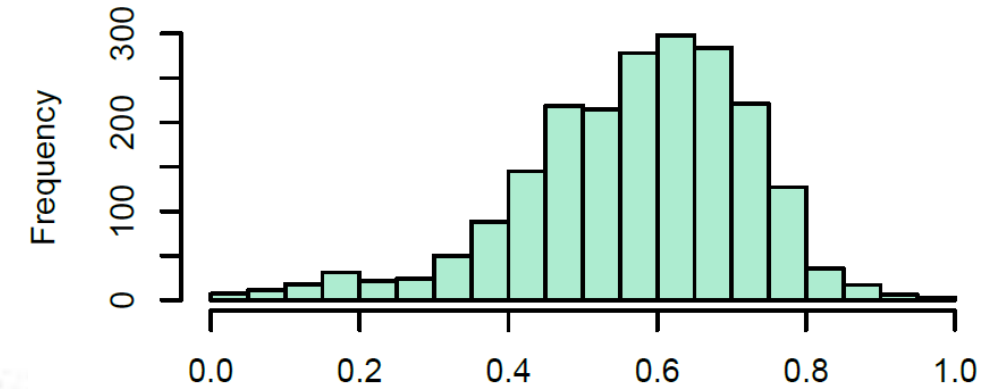
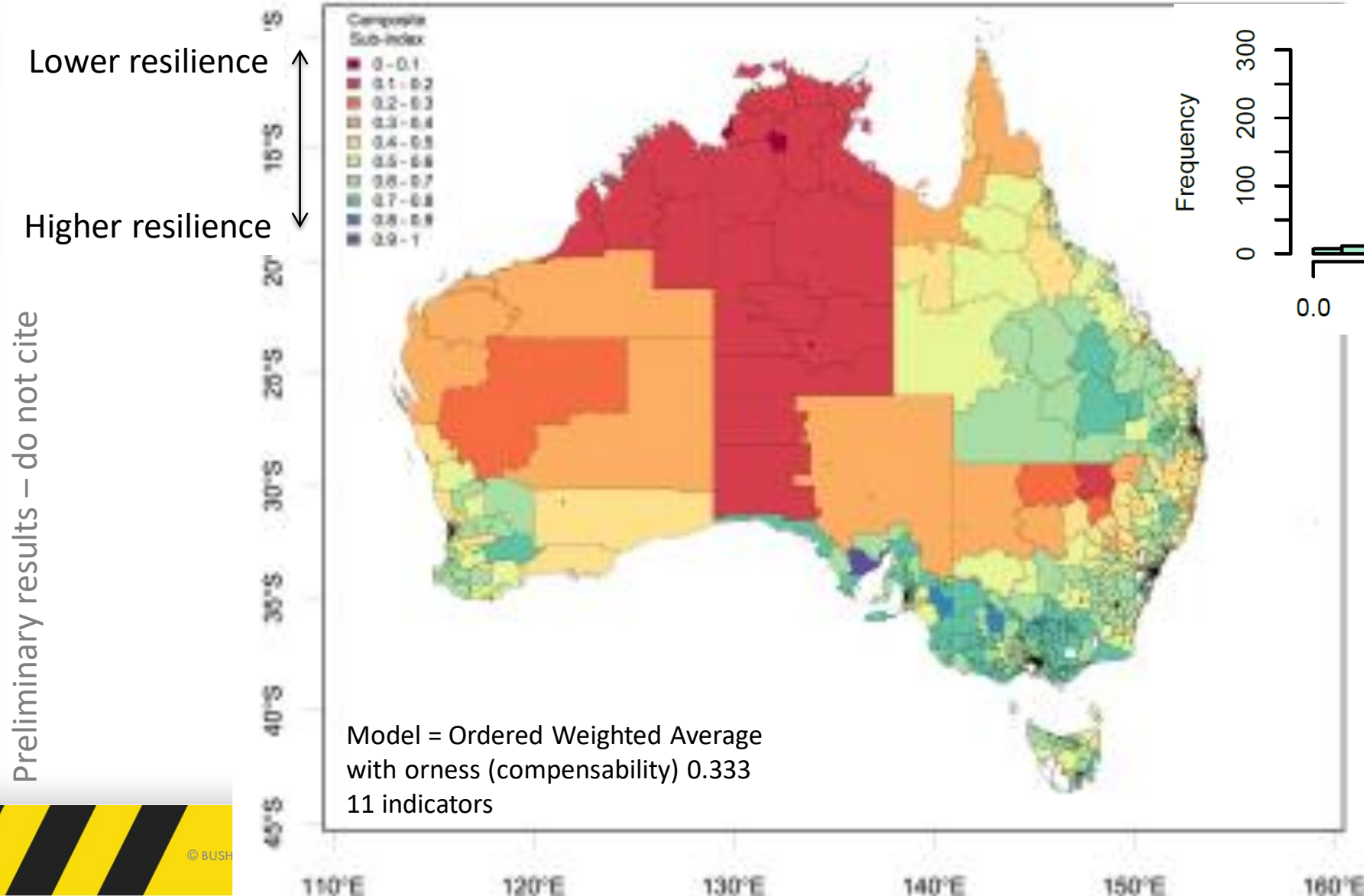


Based on 15 indicators of:

- Health workforce
- Emergency service workforce
- Emergency service funding per capita
- Remoteness

INDEX – COMMUNITY CAPITAL THEME

Capacity for cohesion, connectedness and coordination for mutual benefit



Based on 11 indicators of:

Crime and safety

Access to services

Volunteering

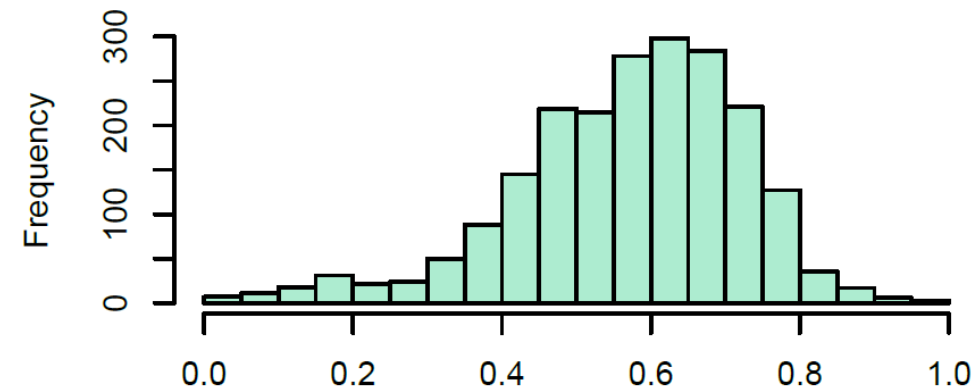
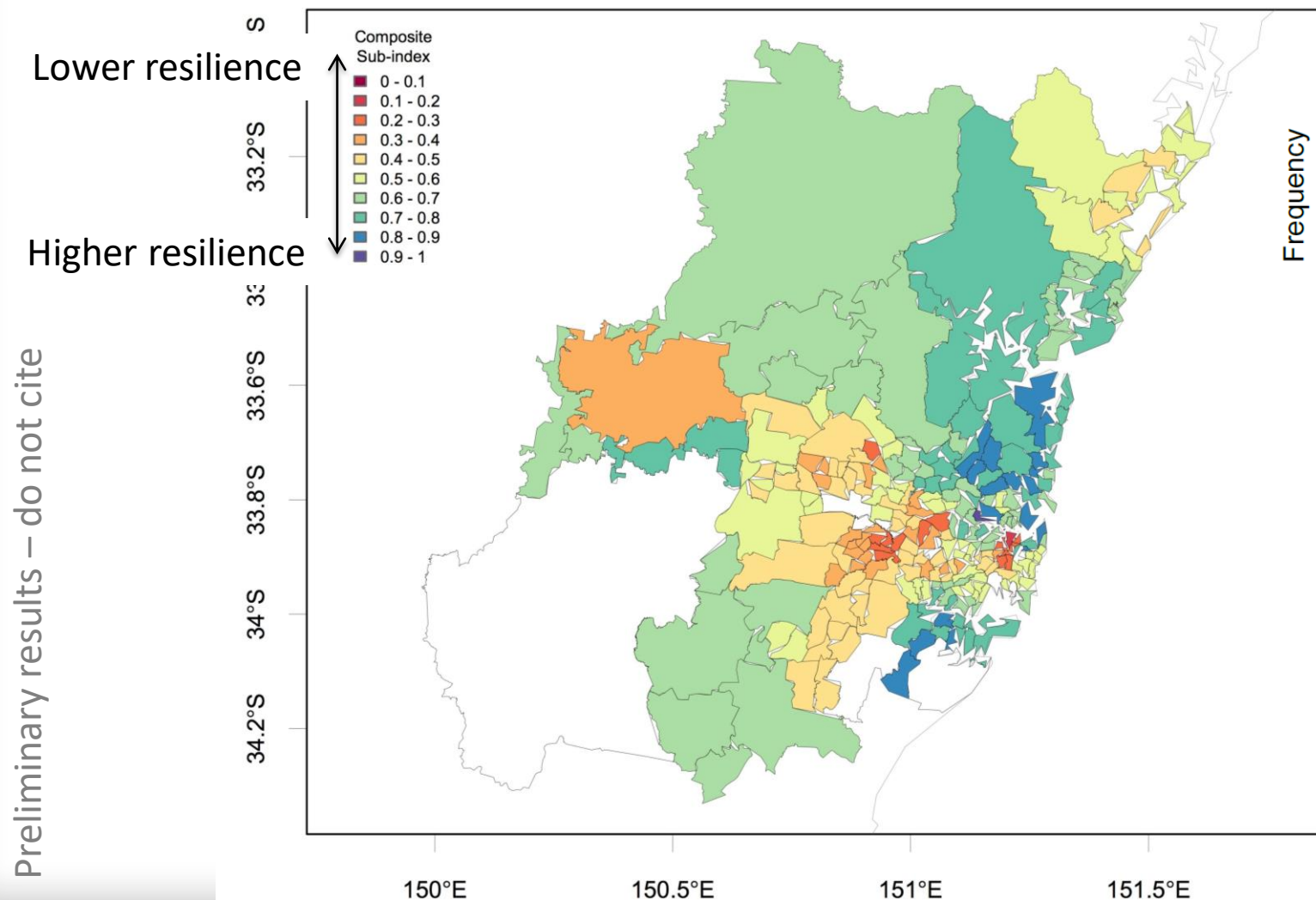
Wellbeing

Length of residence

Preliminary results – do not cite

INDEX – COMMUNITY CAPITAL THEME

Capacity for cohesion, connectedness and coordination for mutual benefit



Based on 11 indicators of:

Crime and safety

Access to services

Volunteering

Wellbeing

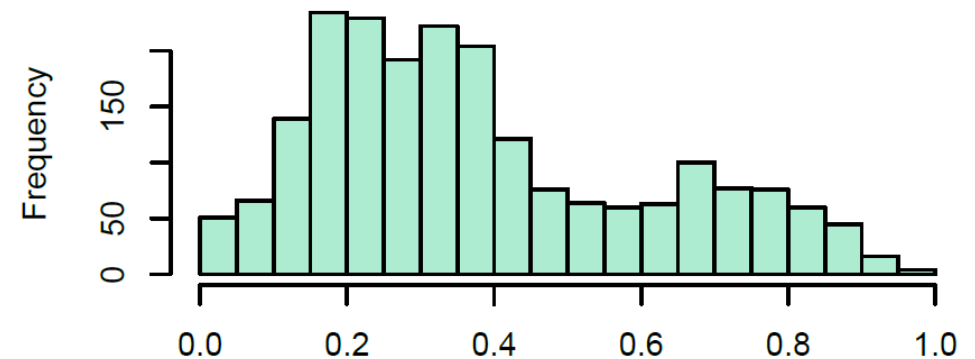
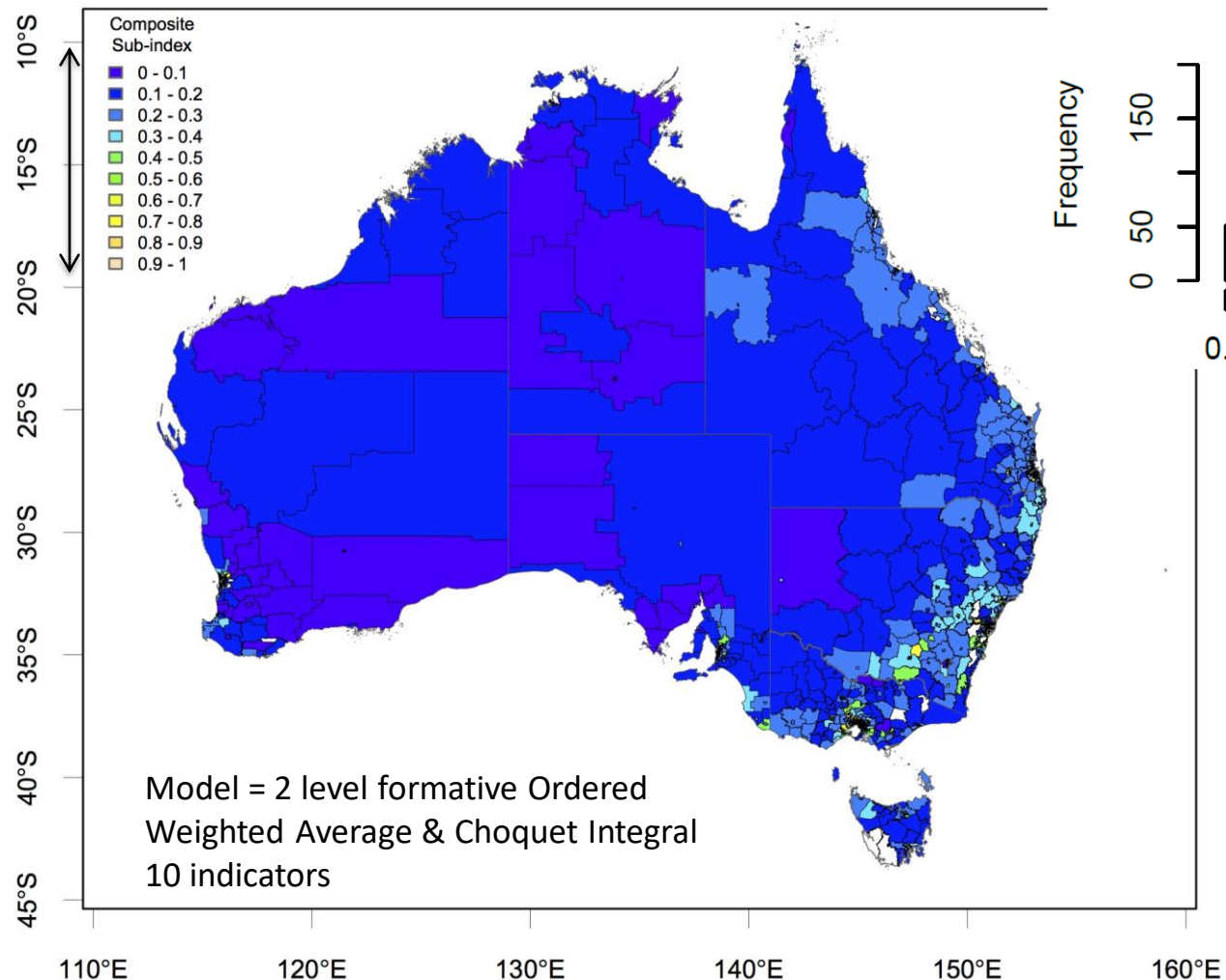
Length of residence

INDEX – PLANNING AND INFRASTRUCTURE THEME

The capacity to prepare for natural hazards using landuse planning, mitigation or disaster planning

Lower resilience

Higher resilience



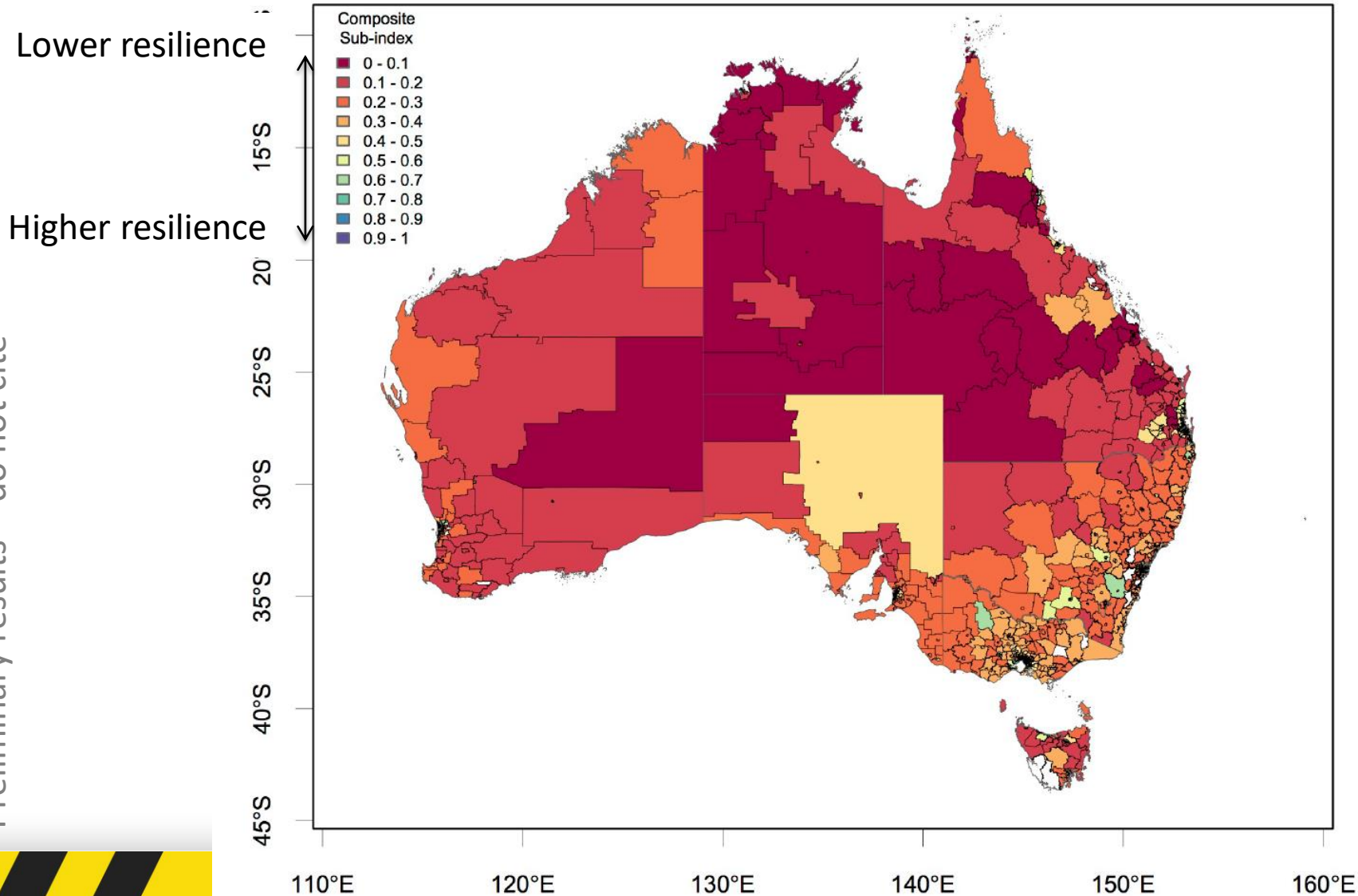
Based on 10 indicators of:

- Dwelling age and type
- Emergency planning assessment score
- Council capacity
- Planning assessment score

Preliminary results – do not cite

INDEX - GOVERNANCE, POLICY AND LEADERSHIP THEME

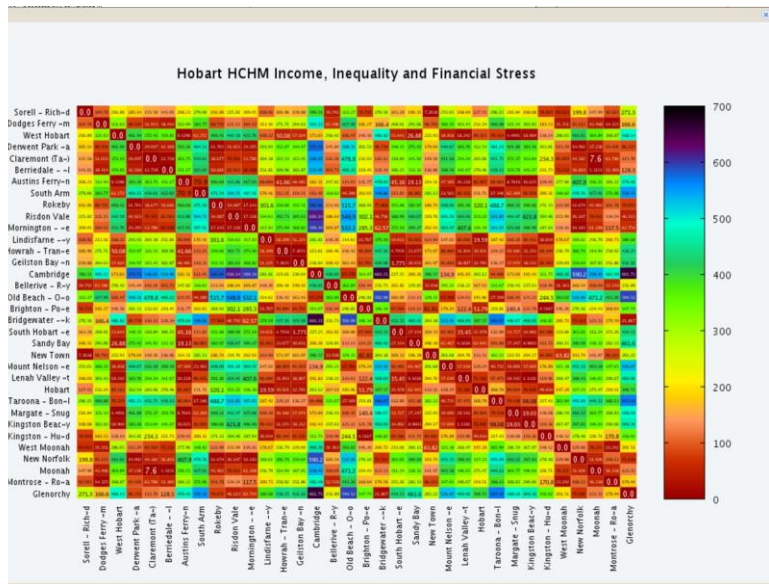
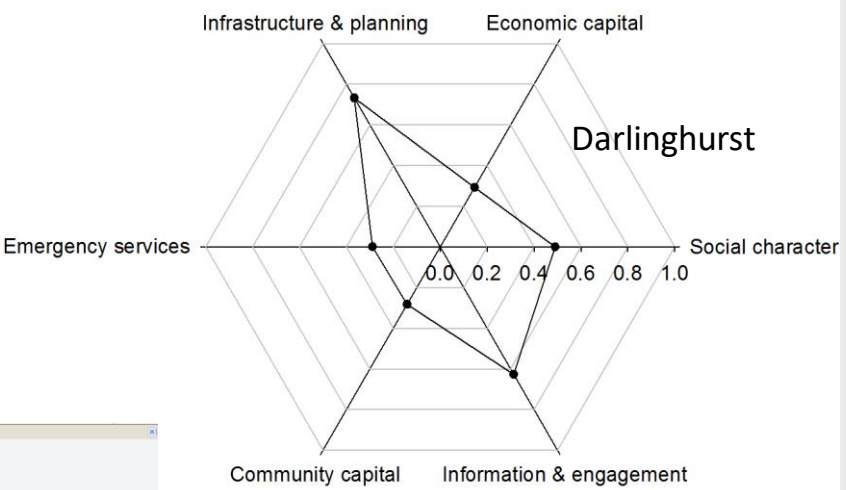
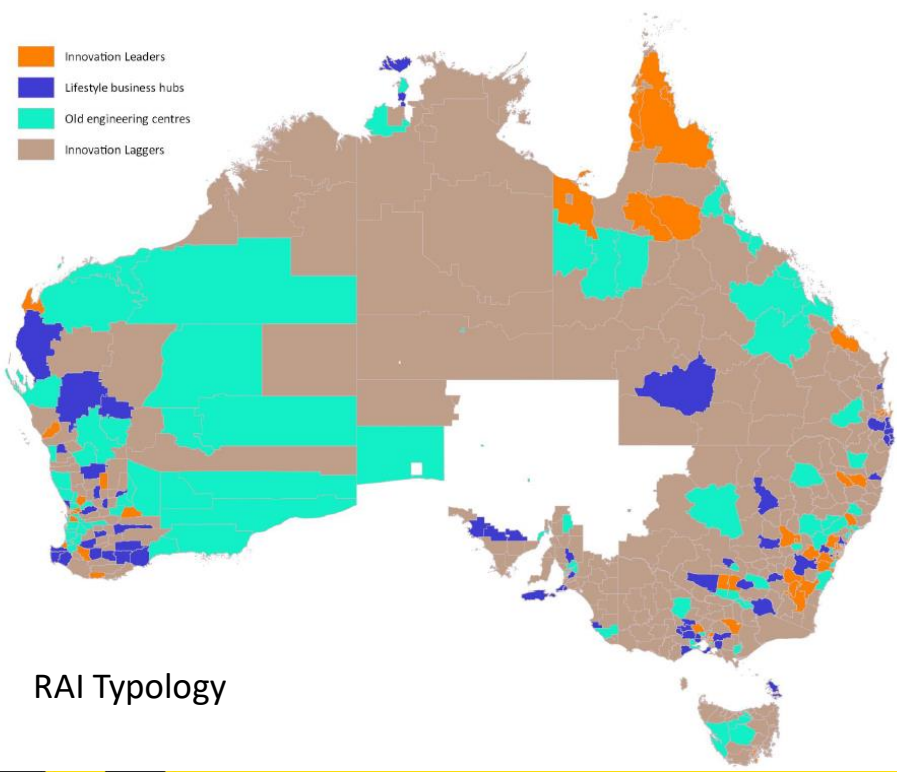
The capacity within agencies to learn, adapt and transform



Based on 4 indicators of:
Research and development
Capacity for innovation
Emergency service governance
environment

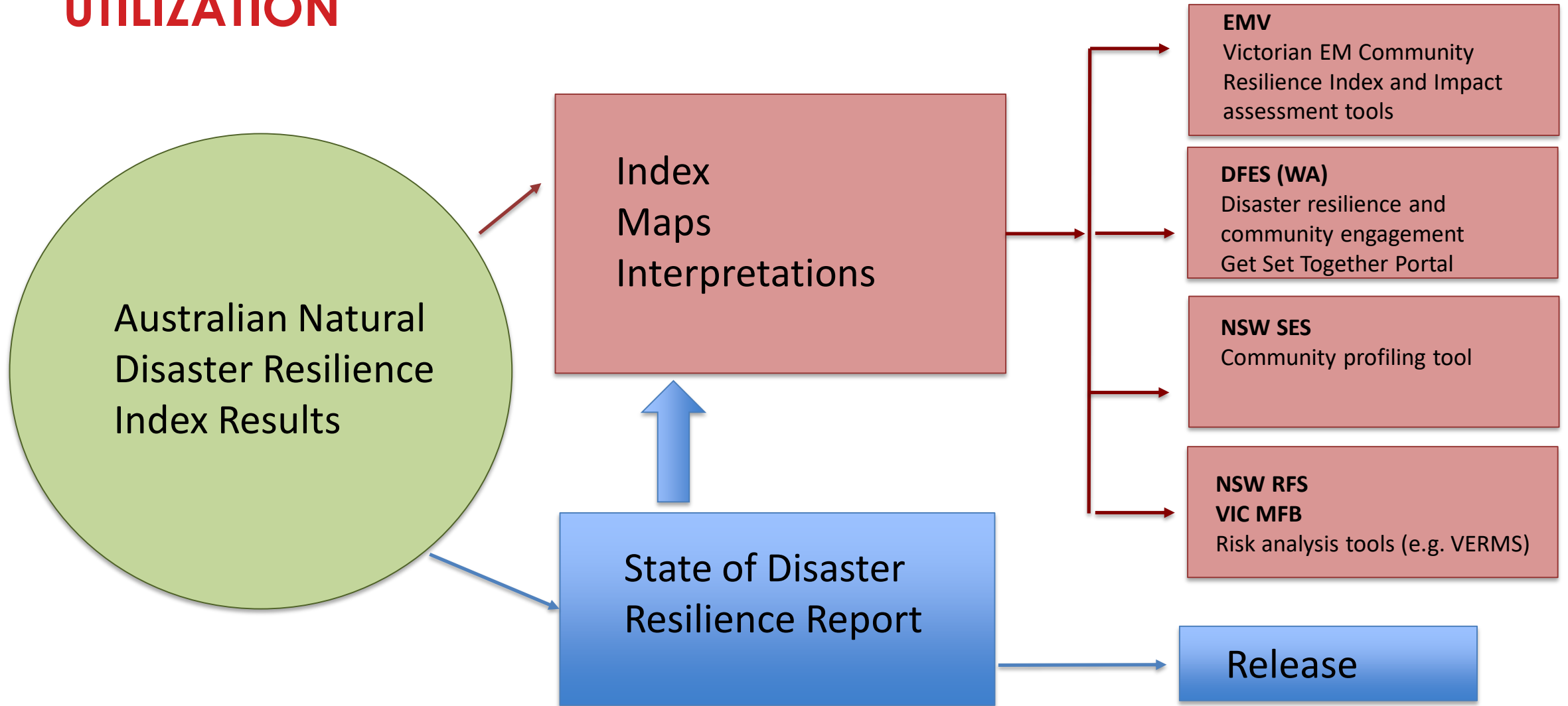
NEXT STEPS - THE STATE OF DISASTER RESILIENCE REPORT

1) Strengths-based approach to interpretation of disaster resilience



AURIN Heat Map

UTILIZATION





Research Utilisation – ANDRI

WA Department of Fire and Emergency Services - Community Preparedness

Rachel Armstrong

- Get Ready – Regionalised information on an All hazards preparedness portal.
- Design and targeting of our community preparedness programs at a regional and local level, eg. through our *Areas of community engagement focus*.
- A conceptual framework to help evaluation the impact or our programs on disaster resilience.

