



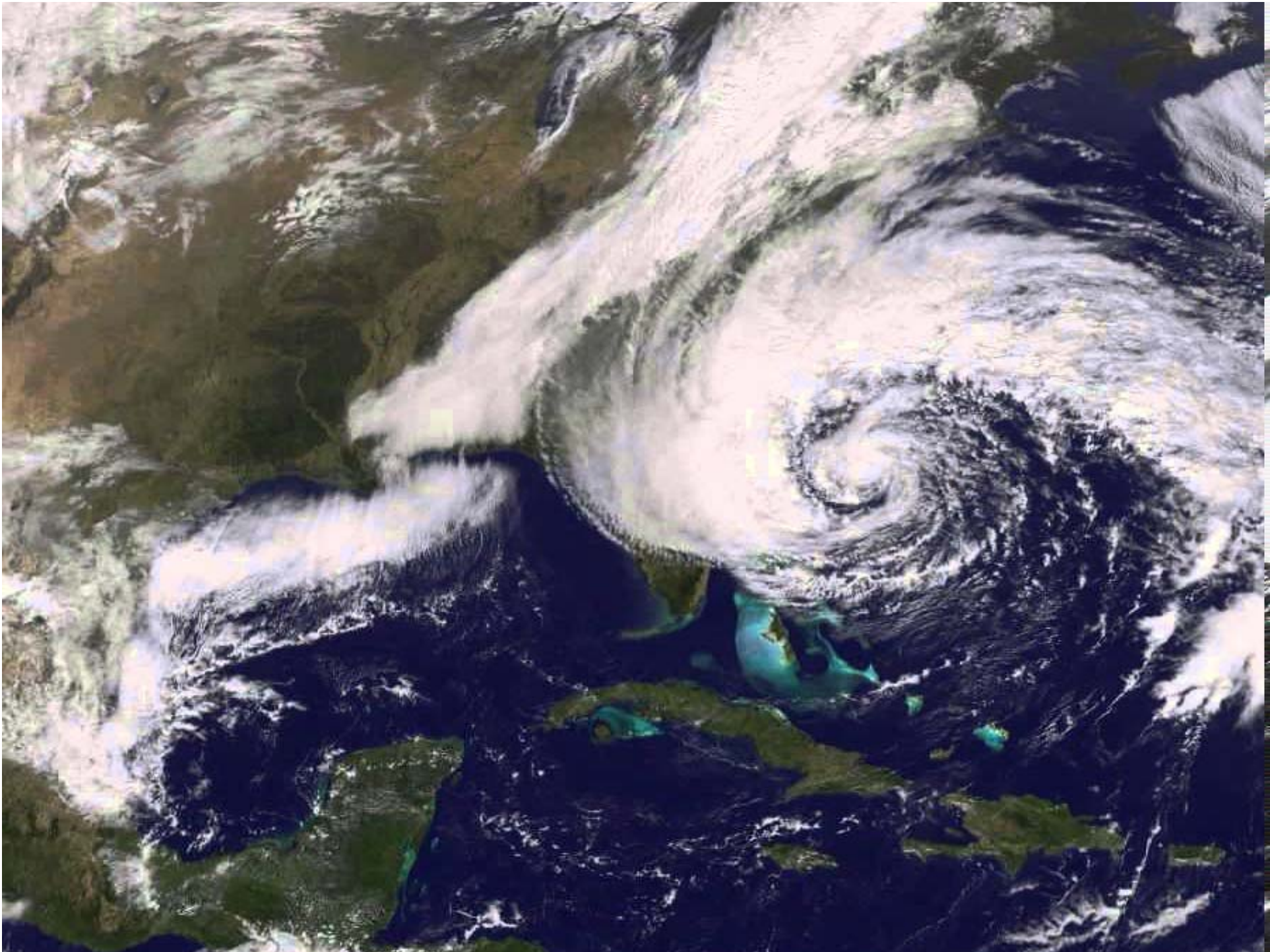
bushfire&natural
HAZARDSCRC

Planning and Capability Requirements for Catastrophic and Cascading Events

ANDREW GISSING, MATALENA TOFA, KATHARINE HAYNES, MICHAEL EBURN, GAVIN SMITH

Risk Frontiers, Macquarie University, NSW
Australian National University, ACT
Coastal Resilience Center, University of North Carolina

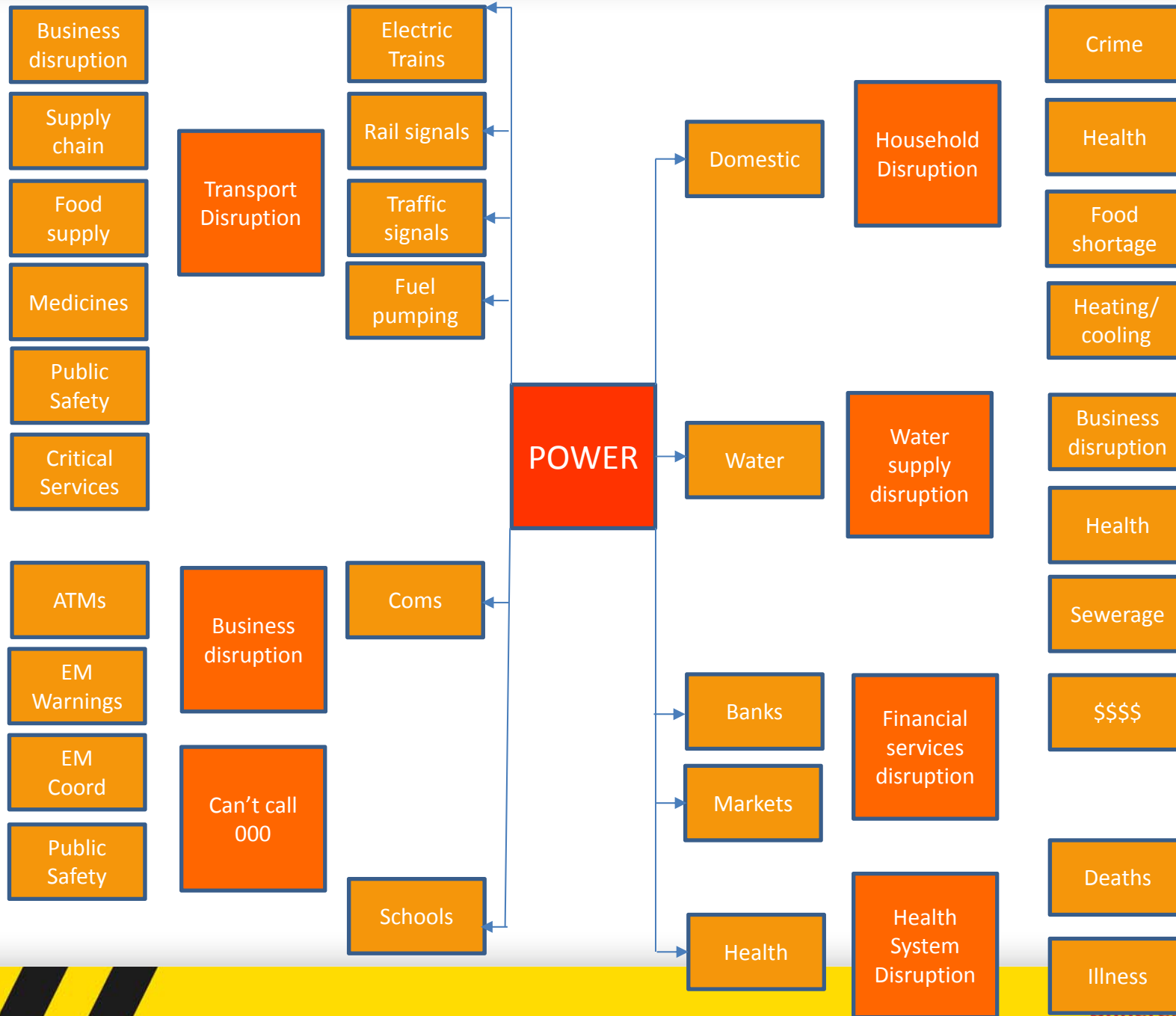
© BUSHFIRE AND NATURAL HAZARDS CRC 2015











SA storms: Adelaide residents spend night in darkness during state-wide blackout

Updated 29 Sep 2016, 10:01am

The heatwave Australia is NOT ready for: 40,000 homes blacked out in Adelaide as air-con demand pushes grid to breaking point – and Sydney's next with 40C-plus days and the hottest February EVER

Freedom of Information Act messages reveal police fears over civil disorder amid storm-hit statewide power blackout

Australian banana price crisis looms again as Cyclone Yasi wipes out crop

Insurers brace for record damage bill due to twin weather disasters brought by Cyclone Debbie

Toyota, Other Major Japanese Firms Hit by Quake Damage, Supply Disruptions

Earthquake in Adelaide could cause deaths and damage, Macquarie University modelling suggests

Death toll soared during Victoria's heatwave

Catastrophic flood could sink Sydney suburbs

Levy to pay for \$5.6b flood bill

Taxpayers earning over \$50,000 a year will be hit with a new levy to help pay the estimated \$5.6billion bill for the floods..

Widespread disruption, heavy losses likely from Cyclone Debbie

FAILURE OF BASSLINK SUBSEA CABLE 'AN ACT OF GOD': REPORT

Earth could get just 12 hours' warning of damaging solar storm

Mackay 'dodged a bullet'



THE RESEARCH PROJECT

- Understanding catastrophe and associated planning
- Integration of non-traditional capabilities and consideration of rapid expansion models
- Risk Management
- Development of integrated tool to consider planning and capability requirements

