



bushfire&natural  
**HAZARDS**CRC

# RESEARCH PROGRAM OVERVIEW

August 2014

**Michael Rumsewicz**

Research Manager, BNHCRC



An Australian Government Initiative



# BUSHFIRE AND NATURAL HAZARDS CRC

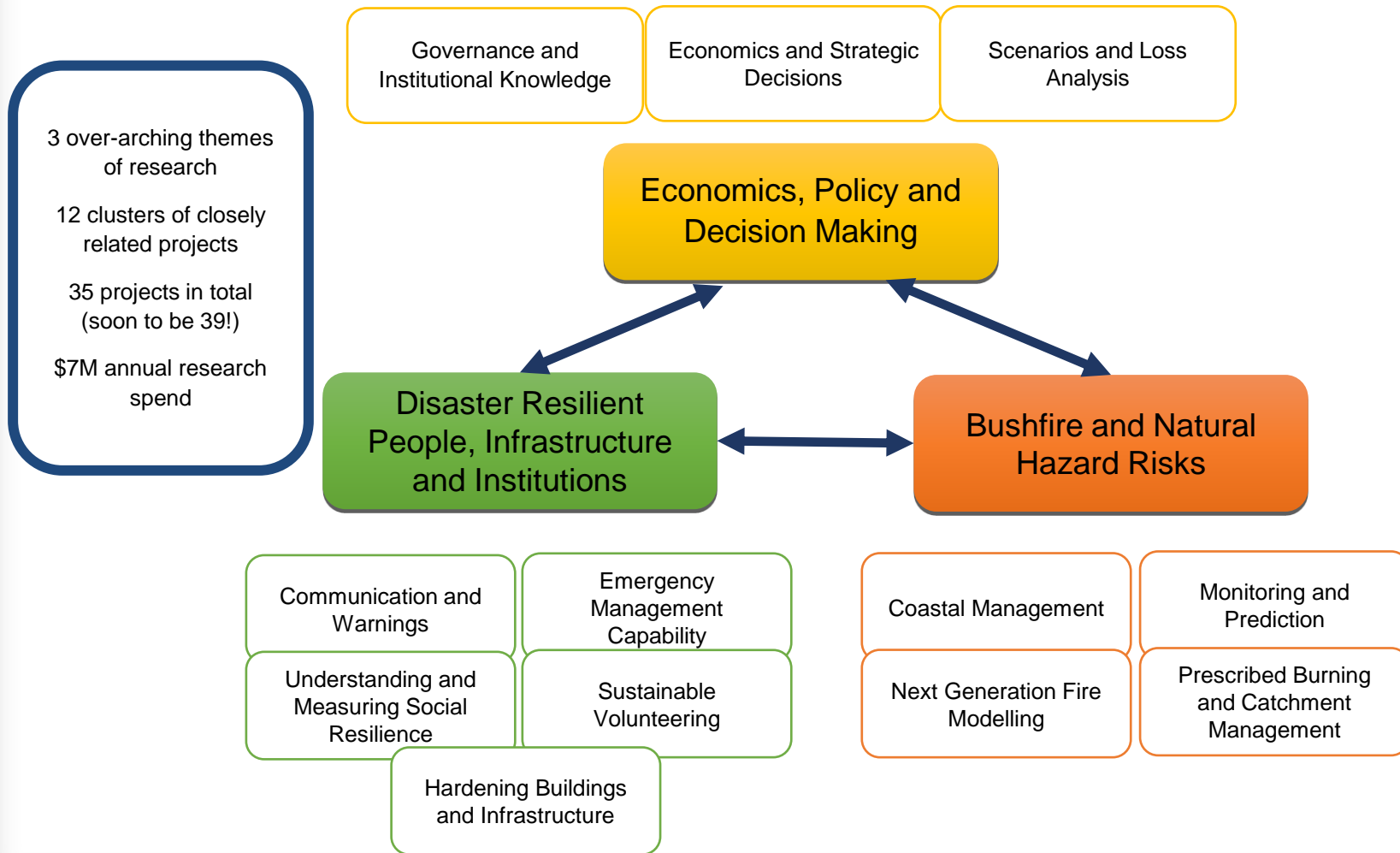
- 1) Research to build a disaster resilient Australia
- 2) Focus on natural hazards - bushfire, flood, cyclone, earthquake, storm, tsunami
- 3) Established 1 July 2013 under Australian Government CRC Program
- 4) Cooperative Research Centre Program funds
  - \$47m over 8 years from Commonwealth
  - Approx \$130m cash + in-kind in total
- 5) CRC Partners
  - Commonwealth, via AG-D
  - Fire, land management and emergency agencies from all states and territories (approximately 25)
  - Universities (approximately 20)
  - Bureau of Meteorology and Geoscience Australia
  - Non-Government Organisations
- 6) Research commenced March 2014



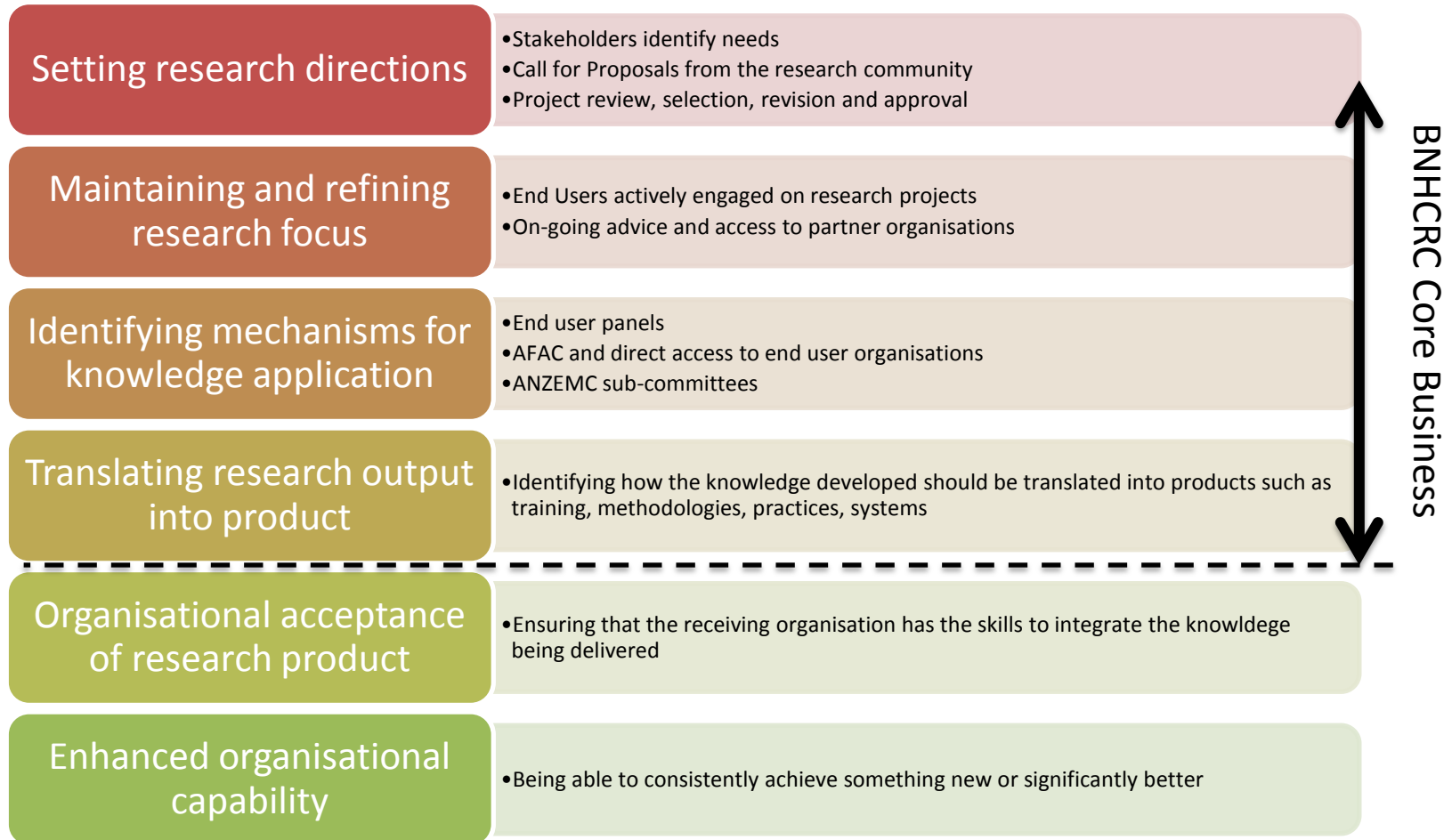
# WHERE ARE WE GOING?

- 1) **Vision:** The preferred and trusted source of research and knowledge in bushfire and natural hazards
- 2) **Mission:** To provide valued, high-quality research and advice on bushfire and natural hazards in order to:
  - Reduce risk
  - Enhance disaster resilience
  - Reduce negative social, economic and environmental impacts
  - Build an internationally renowned Australian and New Zealand research and utilisation capacity and capability
- 3) **Strategic Goals:**
  - Create a sustainable emergency management research capability
  - Generate knowledge through high-quality research
  - Build enduring partnerships for effective conduct and use of research
  - Translate the research through to adoption
  - Contribute to the delivery of a disaster resilient Australasia

# WHAT ARE WE DOING?



# HOW ARE WE GOING TO DO IT?



# INTEGRATED PROJECT TEAMS

## **Integrated Project Team comprising Project Leader, Researchers, User Representatives**

### **Project Leader:**

- Sets technical direction and responsible for quality of project research outcomes.
- Reporting and advice to the Research Manager on overall health of the Project.
- Most are internationally reputed, with a blend of middle career researchers with excellent track records.

### **Researchers:**

- Responsible for carrying out the research, managed by the Project Leader, informed by Users.
- Students provide capacity to explore questions beyond the core focus of the specific projects

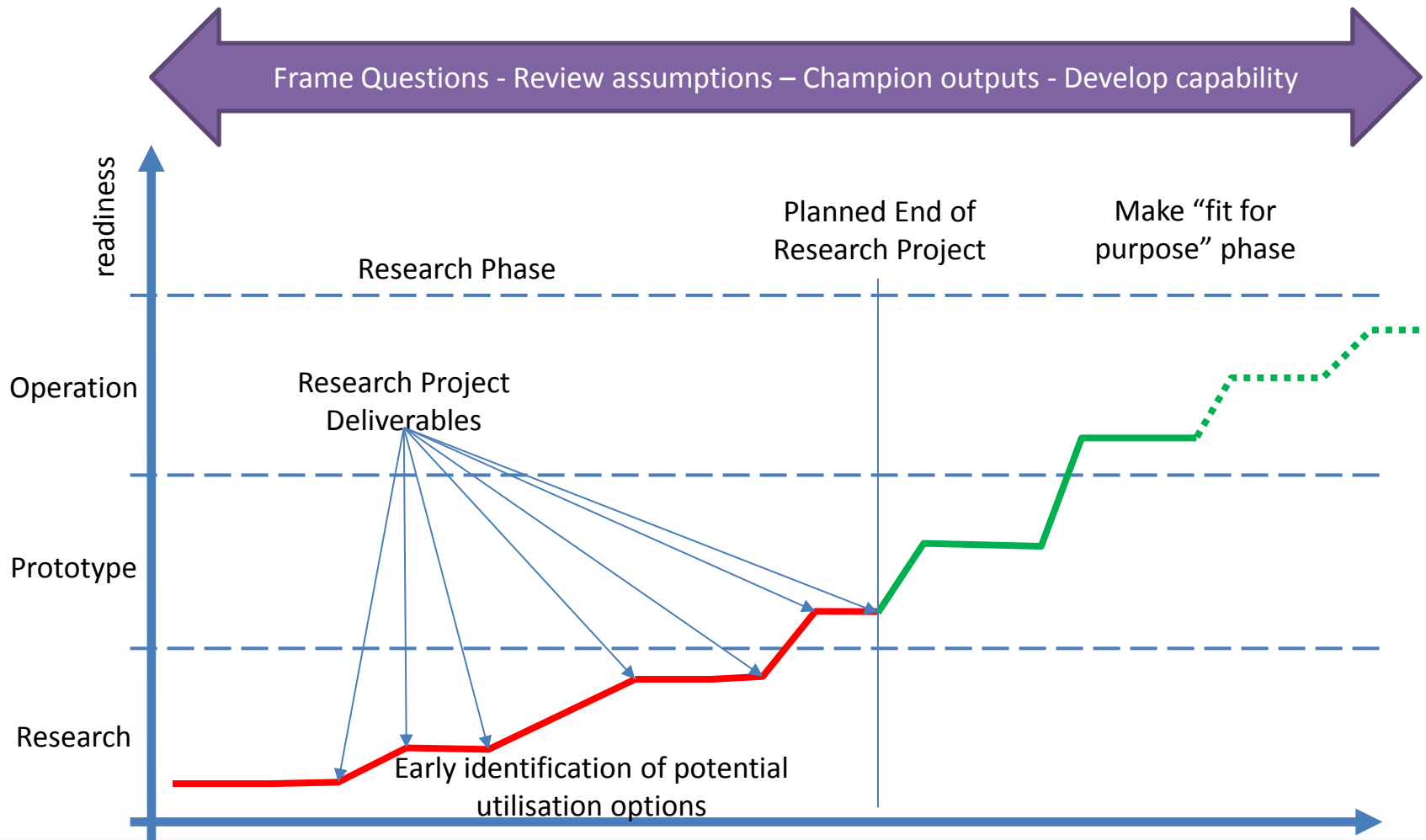
### **Users:**

- Essential to long term project success through
  - framing of research questions,
  - development of common language within the Integrated Project Team,
  - on-going review of the research questions,
  - facilitating access to data/information/people to support project goals,
  - identification of potential use of research outputs
- Not responsible for directing the projects – the focus of the role is to provide advice to the project and to the Research Manager to assist in project utility, quality and focus.

# FIRE AND RESCUE NSW PROJECT ENGAGEMENT

Cluster	Representative
Communications & warnings	Chief Superintendent Greg Wild, Assistant Director Operational Communications
Sustainable volunteering	Samantha Colwell, Manager Community Fire Units
Hardening buildings and infrastructure	Chief Superintendent Greg Buckley, Assistant Director Built Environment
Emergency management capability	Chief Superintendent Paul McGuiggan, Assistant Director Capability Management
Understanding and measuring social resilience	Chief Superintendent Chris Lewis, Assistant Director Community Safety

# PROJECT ROADMAPS & TECHNOLOGY READINESS LEVEL EVOLUTION





# KEEPING IN TOUCH

- 1) Twice annual Research Advisory Forums
- 2) Briefings via AFAC and other outlets
- 3) Conference and journal publications
- 4) Our website – [www.bnhcrc.com.au](http://www.bnhcrc.com.au)
- 5) Via Hazard News and Hazard Notes – sign up via the website
- 6) Follow us on Twitter (@BNHCRC) and like us on Facebook
- 7) Call us!

**THANK YOU**