



bushfire&natural
HAZARDSCRC

FORECASTING THE IMPACTS OF SEVERE WEATHER: How does our work reduce the impacts of natural disasters?

Harald Richter¹, Craig Arthur², David Wilke¹, Beth Ebert¹, Mark Dunford², Martin Wehner², Jane Sexton², Shoni Maguire¹, Jeff Kepert¹, Russel Hay², Mark Edwards²

(1) Bureau of Meteorology

(2) Geoscience Australia, Canberra, ACT

© BUSHFIRE AND NATURAL HAZARDS CRC 2018



Australian Government
Department of Industry,
Innovation and Science

Business

Cooperative Research
Centres Programme



Australian Government
Geoscience Australia



Australian Government
Bureau of Meteorology

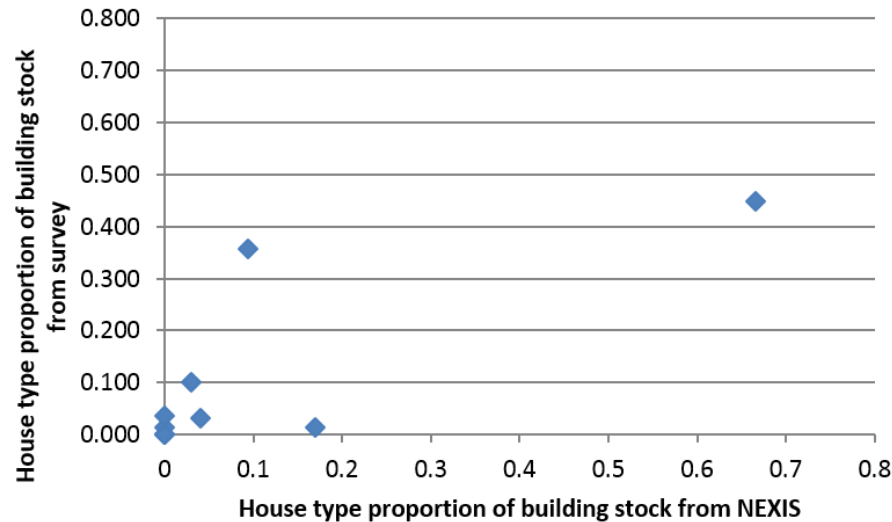
QUANTIFY IMPACTS

We aim to wind & rain quantify damage by augmenting the hazard intensity with exposure and vulnerability information



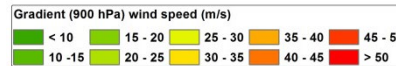
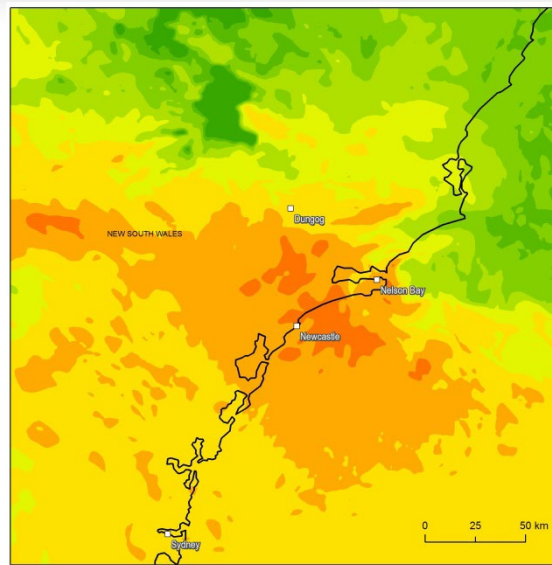
IDENTIFY DATA GAPS

We highlight information gaps in currently available data required to conduct impact simulations.

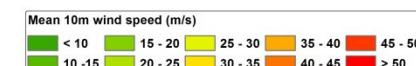
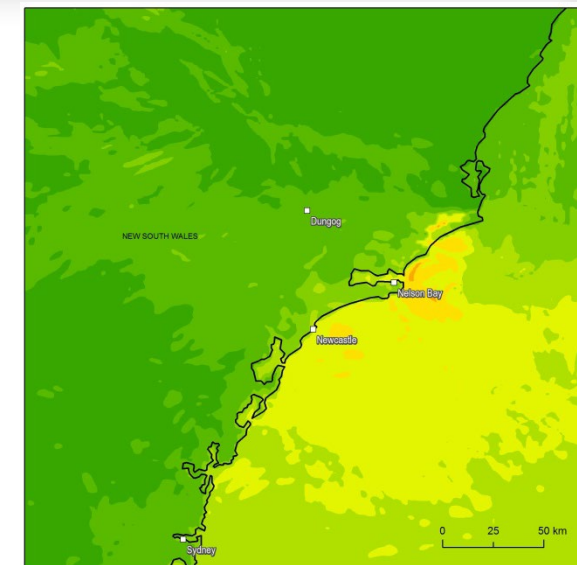


DERIVE IMPACT PREDICTORS

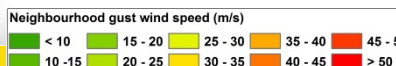
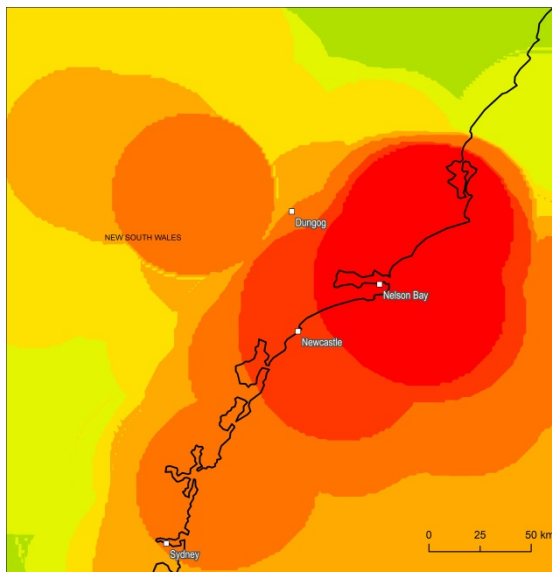
We are exploring how numerical weather prediction model output best relates to asset damage on the ground.



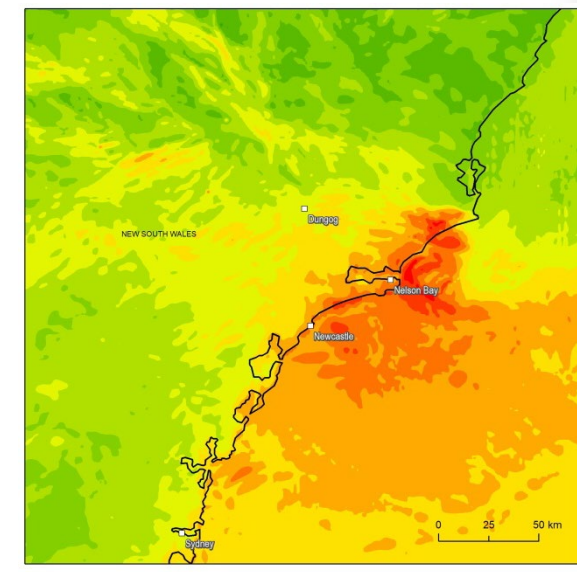
© Commonwealth of Australia (Geoscience Australia) 2016. With the exception of the Commonwealth Coat of Arms and where otherwise noted, this product is provided under a Creative Commons Attribution 4.0 International License.



© Commonwealth of Australia (Geoscience Australia) 2016. With the exception of the Commonwealth Coat of Arms and where otherwise noted, this product is provided under a Creative Commons Attribution 4.0 International License.



© Commonwealth of Australia (Geoscience Australia) 2016. With the exception of the Commonwealth Coat of Arms and where otherwise noted, this product is provided under a Creative Commons Attribution 4.0 International License.



© Commonwealth of Australia (Geoscience Australia) 2016. With the exception of the Commonwealth Coat of Arms and where otherwise noted, this product is provided under a Creative Commons Attribution 4.0 International License.