



Photo: Country Fire Authority  
Key Topics:

- communities [2]
- recovery [3]
- resilience [4]


Recovery Capitals [5]  
The Recovery Capitals (ReCap) project aimed to promote wellbeing after disasters by examining the disaster recovery evidence base and producing a set of resources to help guide recovery efforts. The project developed a suite of resources that serve a range of purposes and are designed to guide disaster recovery efforts across different community contexts.

Project: detail Notabs

Research team

Research leader


[6]



Prof Lisa Gibbs

[6]


RESEARCH LEADER



[7]

Research team

[8]




Prof David Johnston

[8]

RESEARCH TEAM

[10]



Phoebe Quinn

[10]

RESEARCH TEAM

[9]

[7]



## End User representatives

[11]



**Anne Leadbeater**  
[11]  
END-USER

[12]



**Craig Madden**  
[12]  
END-USER

[13]



[14]

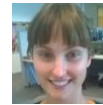


**Gwynne Brennan**  
[14]  
END-USER

[15]



[16]



**Dr Holly Foster**  
[16]  
END-USER

[17]



[18]



**Kate Brady**  
[18]  
END-USER

[19]



[20]



**Pauline Cole**  
[20]  
END-USER

[21]



[22]



**Susan Davie**  
[22]  
END-USER

[23]



[24]



**Trish Wall**  
[24]  
END-USER

[25]



## Description

Disaster recovery is a complex process, requiring support from a range of people and organisations after an event. For the past decade, the four recovery environments (built, social, economic and natural) have been used to recognise this complexity and frame recovery efforts. However, recovery efforts often remain siloed, with inadequate attention paid to the interconnectedness between environments and the particular nuances across the social environment. There is a need for accessible, engaging and evidence-based resources to provide guidance for how to apply key recovery principles in practice.

The Recovery Capitals (ReCap) project aimed to promote wellbeing after disasters by examining the disaster recovery evidence base and producing a set of resources to help guide recovery efforts. It was a collaboration between the University of Melbourne, Massey University (Aotearoa New Zealand), Australian Red Cross, and other researchers, government and non-government agencies and organisations from across Australia and Aotearoa New Zealand.

The ReCap project began with an examination of the evidence base for recovery risk and protective factors using a Community Capitals Framework (Emery, Fey and Flora, 2006). It focused on how seven forms of capital - natural, built, political, cultural, human, social, financial - can influence wellbeing after disasters, and how they can influence each other. Through discussions between researchers and end-users, this was then adapted to develop the Recovery Capitals Framework (RCF). The RCF highlights the interconnectedness between recovery capitals, multiple dimensions regarding people, place and time and values of diversity and equity.

The ReCap resources serve a range of purposes and are designed to guide disaster recovery efforts across different community contexts. The resources can be used to build capacity rapidly after an event, as well as in pre-event recovery planning to enhance resilience prior to disasters. They can be used in a wide range of disaster contexts, and by the wide range of people engaged in disaster recovery including policy makers, 'on-the-ground' staff and volunteers, including those whose core work is unrelated to disasters (e.g., teachers, healthcare workers and community organisations). The ReCap resources have also been tailored to the sociocultural contexts of the two countries, particularly with regard to representing the cultural perspectives and experiences of Indigenous peoples in appropriate ways.

The resources are available via [www.recoverycapitals.org.au](http://www.recoverycapitals.org.au) [26]. Watch an overview of the ReCap research below.

Related News



14 DEC 2021

Recovery research honoured with Resilient Australia Award  
COMMUNITIES, RECOVERY

[27]



22 SEP 2021

ABC podcast helping people recover from disaster  
COMMUNITIES, RECOVERY

[28]



# munication and war

## olution of unications and warnings ergency preparedness, se and recovery

24 AUG 2021

Protecting communities with better warnings and communications – an online guide to using the latest research  
COMMUNICATION, COMMUNITIES

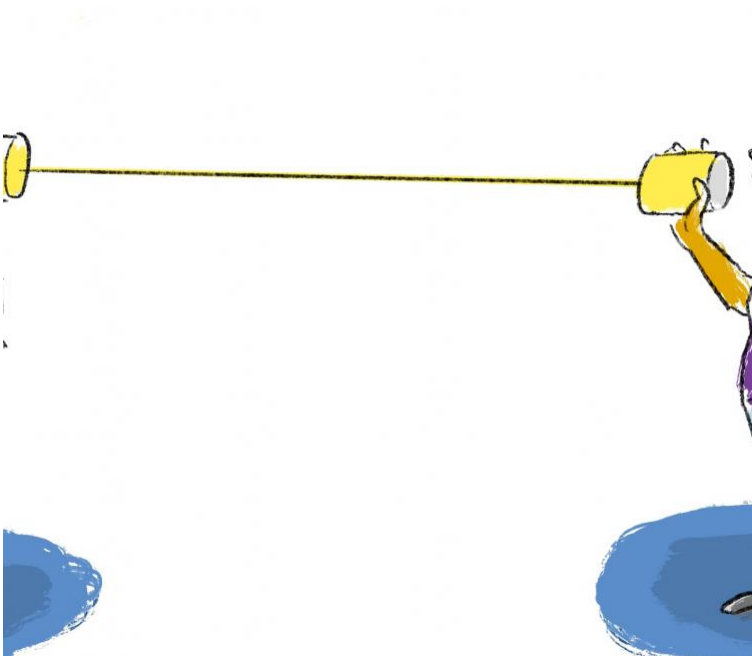
[29]



19 OCT 2020

Emergency management in the community  
COMMUNICATION, COMMUNITIES

[30]



New evidence-based guide helps communities recover from emergencies  
COMMUNITIES, INDIGENOUS COMMUNITIES

18 AUG 2020

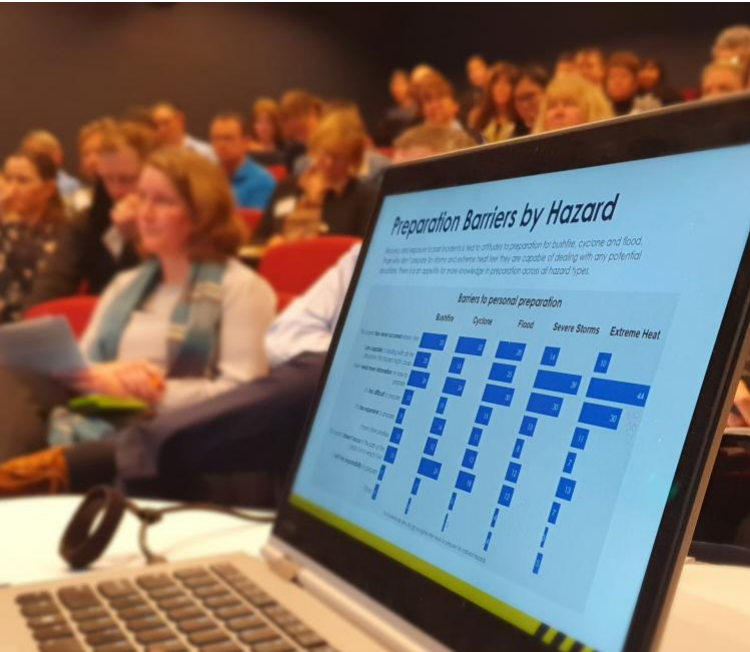
[31]



New online - August 2020  
COMMUNICATION, LOCAL KNOWLEDGE

14 AUG 2020

[32]



Research guides communications with community  
CHILD-CENTRED, COMMUNICATION

01 OCT 2019

[33]



New online - September 2019  
EMERGENCY MANAGEMENT, MULTI-HAZARD

11 SEP 2019

[34]



31 AUG 2017

New natural hazards science for Australia  
MENTAL HEALTH, RESILIENCE

[35]



22 MAR 2017

New science set to dazzle











[36]

Publications

Year	Type	Citation
2022	Journal Article	Quinn, P. [37], Williamson, B. [38] & Gibbs, L. [6] <b>Indigenous-informed disaster recovery: Addressing collective trauma using a healing framework</b> [39]. <i>Progress in Disaster Science</i> <b>16</b> , (2022). DOI [40]
2022	Journal Article	Quinn, P. [37] <i>et al.</i> <b>Recovery Capitals: a collaborative approach to post-disaster guidance</b> [44]. <i>Australian Journal of Emergency Management</i> <b>37</b> , (2022). DOI [45] Google Scholar [46] BibTeX [47] Er
2021	Report	Gibbs, L. [6] <i>et al.</i> <b>Recovery Capitals (ReCap): navigating the complexities of disaster recovery - final project report</b> [49]. (Bushfire and Natural Hazards CRC, 2021). Google Scholar [50] BibTeX [51]
2020	Report	Morley, P. [53], Barclay, E. [54] & Parsons, M. [55] <b>Barriers and enablers in the long term recovery of communities affected by natural hazards: a review of the literature</b> [56]. (Bushfire & Natural Ha
2020	Report	Gibbs, L. [6] <i>et al.</i> <b>Recovery Capitals (ReCap): applying a community capitals framework to disaster recovery - annual report 2019/20</b> [60]. (Bushfire and Natural Hazards CRC, 2020). Google Schok
2019	Report	Gibbs, L. [6] <i>et al.</i> <b>Recovery capitals: applying a community capitals framework to disaster recovery annual report 2018-2019</b> [64]. (Bushfire and Natural Hazards CRC, 2019). Google Scholar [65] B

Presentations & Resources



DATE	TITLE	DOWNLOAD	KEY TOPICS
18 Apr 2017	Factors Affecting Long Term Community Recovery [70]	 261.69 KB	[70] [261.69 KB] [2], recovery [3], resilience
07 Jul 2017	Lightning presentation: factors affecting long-term community recovery [72]	 415.29 KB	[72] [415.29 KB] [2], recovery [3], resilience
31 Aug 2017	Fire Australia Issue Three 2017 [74]	 5.22 MB	[74] [5.22 MB] [76], prescribed burning [76]
16 Apr 2018	Barriers and enablers to long term recovery of communities [79]	 789.17 KB	[80] [789.17 KB] [2], emergency managem
24 Sep 2019	Applying a Community Capitals Framework to Disaster Recovery [82]	 4.6 MB	[82] [4.6 MB] [2], recovery [3]
01 Dec 2020	Recovery Capitals [84]		communities [2], recovery [3], resilience
02 Feb 2021	How to enhance community recovery after disasters [85]	 1.61 MB	[86] [1.61 MB] [2], recovery [3], resilience
13 Aug 2021	Prof Lisa Gibbs interview: Understanding and using Recovery Capitals research [87]	 0 bytes	[88] [0 bytes] [2], recovery [3], resilience
13 Aug 2021	Recovery: Understanding and using Recovery Capitals research [89]	 0 bytes	[90] [0 bytes] [2], recovery [3], resilience
13 Aug 2021	The evolution of communications and warnings in emergency preparedness, response and recovery [91]	 0 bytes	[92] [0 bytes] [2], recovery [3], resilience
13 Aug 2021	Trailer, Recovery: Understanding and using Recovery Capitals research [95]	 0 bytes	[96] [0 bytes] [2], recovery [3], resilience
13 Aug 2021	Driving change: the evolution of communications and warnings in emergency preparedness, response and recovery [97]		communication [93], communities [2], w
06 Dec 2021	Recovery Capitals resources launch: A cross-Tasman collaboration to support wellbeing after disaster [98]	 0 bytes	[99] [0 bytes] [2], recovery [3], resilience
14 Dec 2021	2021 Resilient Australia National Mental Health and Wellbeing Award Winner   Recovery Capitals [100]	 0 bytes	[101] [0 bytes] [2], recovery [3], resilience

Posters



[102]  
**Factors affecting long term community recovery**  
[102]  
COMMUNITIES [2], RECOVERY [3]  
This project will address two complimentary areas of research relating to the long term recovery of...

[103]  
**Recovery Capitals (ReCap)**  
[103]  
RECOVERY [3]  
Key findings: New evidence-based guide to disaster recovery

Source URL:<https://www.bnhcrc.com.au/node/3390/generate-pdf>  
Links

[1] <https://www.bnhcrc.com.au/files/cfapix1190945web.jpg> [2] <https://www.bnhcrc.com.au/research/topics/communities> [3] <https://www.bnhcrc.com.au/research/topics/recovery> [4] <https://www.bnhcrc.com.au/research/topics/resilience> [5] <https://www.bnhcrc.com.au/research/communityrecovery> [6] <https://www.bnhcrc.com.au/people/gibbs> [7] <https://www.bnhcrc.com.au/organisations/umelb> [8] <https://www.bnhcrc.com.au/people/djohnston> [9] <https://www.bnhcrc.com.au/organisations/massey> [10] <https://www.bnhcrc.com.au/people/pquinn> [11] <https://www.bnhcrc.com.au/people/aleadbeater> [12] <https://www.bnhcrc.com.au/people/cmadden> [13] <https://www.bnhcrc.com.au/organisations/departement-defence> [14] <https://www.bnhcrc.com.au/people/gbrennan> [15] <https://www.bnhcrc.com.au/organisations/cfa> [16] <https://www.bnhcrc.com.au/people/hfoster> [17] <https://www.bnhcrc.com.au/organisations/emv> [18] <https://www.bnhcrc.com.au/people/kbrady> [19] <https://www.bnhcrc.com.au/organisations/redcross> [20] <https://www.bnhcrc.com.au/people/pcole> [21] <https://www.bnhcrc.com.au/organisations/dcsi> [22] <https://www.bnhcrc.com.au/people/sdavic> [23] <https://www.bnhcrc.com.au/organisations/sesvic> [24] <https://www.bnhcrc.com.au/people/twall> [25] <https://www.bnhcrc.com.au/organisations/dfes> [26] <http://www.recoverycapitals.org.au/> [27] <https://www.bnhcrc.com.au/news/2021/recovery-research-honoured-resilient-australia-award> [28] <https://www.bnhcrc.com.au/news/2021/abc-podcast-helping-people-recover-disaster> [29] <https://www.bnhcrc.com.au/news/2021/protecting-communities-better-warnings-and-communications-online-guide-using-latest> [30] <https://www.bnhcrc.com.au/news/2020/emergency-management-community> [31] <https://www.bnhcrc.com.au/news/2020/new-evidence-based-guide-helps-communities-recover-emergencies> [32] <https://www.bnhcrc.com.au/news/2020/new-online-august-2020> [33] <https://www.bnhcrc.com.au/news/2019/research-guides-communications-community> [34] <https://www.bnhcrc.com.au/news/2019/new-online-september-2019> [35] <https://www.bnhcrc.com.au/news/2017/new-natural-hazards-science-australia> [36] <https://www.bnhcrc.com.au/news/2017/new-science-set-dazzle> [37] <https://www.bnhcrc.com.au/publications/biblio/?f%5BAuthor%5D=1672> [38] <https://www.bnhcrc.com.au/publications/biblio/?f%5BAuthor%5D=1830> [39] <https://www.bnhcrc.com.au/publications/biblio/bnh-8363> [40] <http://dx.doi.org/10.1016/j.pdisas.2022.100257> [41] [http://scholar.google.com/scholar?btnG=Search%2BScholar&as\\_q=%22Indigenous-informed%2Bdisaster%2Brecovery%3A%2BAddressing%2Bcollective%2BTrauma%2Busing%2Ba%2Bhealing%2Bframework%22&as\\_sauthors=Quinn&as\\_occt=any&as\\_epq=&as\\_oq=&as\\_eq=&as\\_put](http://scholar.google.com/scholar?btnG=Search%2BScholar&as_q=%22Indigenous-informed%2Bdisaster%2Brecovery%3A%2BAddressing%2Bcollective%2BTrauma%2Busing%2Ba%2Bhealing%2Bframework%22&as_sauthors=Quinn&as_occt=any&as_epq=&as_oq=&as_eq=&as_put) [42] <https://www.bnhcrc.com.au/publications/biblio/export/bibtex/8363> [43] <https://www.bnhcrc.com.au/publications/biblio/export/xml/8363> [44] <https://www.bnhcrc.com.au/publications/biblio/bnh-8341> [45] <http://dx.doi.org/10.47389/37.2.52> [46] [http://scholar.google.com/scholar?btnG=Search%2BScholar&as\\_q=%22Recovery%2BCapitals%3A%2Ba%2Bcollaborative%2Bapproach%2Bto%2Bpost-disaster%2Bguidance%22&as\\_sauthors=Quinn&as\\_occt=any&as\\_epq=&as\\_oq=&as\\_eq=&as\\_publication=&as\\_ylo=&as\\_yhi=&as\\_sdtAAP=1&as\\_sdtP=1](http://scholar.google.com/scholar?btnG=Search%2BScholar&as_q=%22Recovery%2BCapitals%3A%2Ba%2Bcollaborative%2Bapproach%2Bto%2Bpost-disaster%2Bguidance%22&as_sauthors=Quinn&as_occt=any&as_epq=&as_oq=&as_eq=&as_publication=&as_ylo=&as_yhi=&as_sdtAAP=1&as_sdtP=1) [47] <https://www.bnhcrc.com.au/publications/biblio/export/bibtex/8341> [48] <https://www.bnhcrc.com.au/publications/biblio/export/xml/8341> [49] <https://www.bnhcrc.com.au/publications/biblio/bnh-8206> [50] [http://scholar.google.com/scholar?btnG=Search%2BScholar&as\\_q=%22Recovery%2BCapitals%2BReCap%3A%2Bnavigating%2Bthe%2Bcomplexities%2Bof%2Bdisaster%2Brecovery%2B-%2Bfinal%2BProject%2BReport%22&as\\_sauthors=Gibbs&as\\_occt=any&as\\_epq=&as\\_oq=&as\\_eq=&as\\_publication=&as\\_ylo=&as\\_yhi=&as\\_sdtAAP=1&as\\_sdtP=1](http://scholar.google.com/scholar?btnG=Search%2BScholar&as_q=%22Recovery%2BCapitals%2BReCap%3A%2Bnavigating%2Bthe%2Bcomplexities%2Bof%2Bdisaster%2Brecovery%2B-%2Bfinal%2BProject%2BReport%22&as_sauthors=Gibbs&as_occt=any&as_epq=&as_oq=&as_eq=&as_publication=&as_ylo=&as_yhi=&as_sdtAAP=1&as_sdtP=1) [51] <https://www.bnhcrc.com.au/publications/biblio/export/bibtex/8206> [52] <https://www.bnhcrc.com.au/publications/biblio/export/xml/8206> [53] <https://www.bnhcrc.com.au/people/pmorley> [54] <https://www.bnhcrc.com.au/publications/biblio/bnh-6568> [57] [https://www.bnhcrc.com.au/publications/biblio/export/bibtex/6568](http://scholar.google.com/scholar?btnG=Search%2BScholar&as_q=%22Barriers%2BAnd%2BEnablers%2Bin%2Bthe%2BLong%2Bterm%2BRecovery%2Bof%2Bcommunities%2Baffected%2Bby%2Bnatural%2Bhazards%3A%2Ba%2Breview%2Bof%2Bthe%2Blite) [59] <https://www.bnhcrc.com.au/publications/biblio/export/xml/6568> [60] <https://www.bnhcrc.com.au/publications/biblio/bnh-7197> [61] [http://scholar.google.com/scholar?btnG=Search%2BScholar&as\\_q=%22Recovery%2BCapitals%2BReCap%3A%2BApplying%2Ba%2Bcommunity%2Bcapitals%2Bframework%2Bto%2Bdisaster%2Brecovery%2B-%2Bannual%2BReport%2B2019%20%22&as\\_sauthors=Gibbs&as\\_occt=any&as\\_epq=&as\\_oq=&as\\_eq=&as\\_publication=&as\\_ylo=&as\\_yhi=&as\\_sdtAAP=1&as\\_sdtP=1](http://scholar.google.com/scholar?btnG=Search%2BScholar&as_q=%22Recovery%2BCapitals%2BReCap%3A%2BApplying%2Ba%2Bcommunity%2Bcapitals%2Bframework%2Bto%2Bdisaster%2Brecovery%2B-%2Bannual%2BReport%2B2019%20%22&as_sauthors=Gibbs&as_occt=any&as_epq=&as_oq=&as_eq=&as_publication=&as_ylo=&as_yhi=&as_sdtAAP=1&as_sdtP=1) [62] <https://www.bnhcrc.com.au/publications/biblio/export/bibtex/7197> [63] <https://www.bnhcrc.com.au/publications/biblio/export/xml/7197> [64] <https://www.bnhcrc.com.au/publications/biblio/bnh-5833> [65] [http://scholar.google.com/scholar?btnG=Search%2BScholar&as\\_q=%22Recovery%2BCapitals%3A%2BApplying%2Ba%2Bcommunity%2Bcapitals%2Bframework%2Bto%2Bdisaster%2Brecovery%2Bannual%2BReport%2B2018-2019%22&as\\_sauthors=Gibbs&as\\_occt=any&as\\_epq=&as\\_oq=&as\\_eq=&as\\_publication=&as\\_ylo=&as\\_yhi=&as\\_sdtAAP=1&as\\_sdtP=1](http://scholar.google.com/scholar?btnG=Search%2BScholar&as_q=%22Recovery%2BCapitals%3A%2BApplying%2Ba%2Bcommunity%2Bcapitals%2Bframework%2Bto%2Bdisaster%2Brecovery%2Bannual%2BReport%2B2018-2019%22&as_sauthors=Gibbs&as_occt=any&as_epq=&as_oq=&as_eq=&as_publication=&as_ylo=&as_yhi=&as_sdtAAP=1&as_sdtP=1) [66] <https://www.bnhcrc.com.au/publications/biblio/export/bibtex/5833> [67] <https://www.bnhcrc.com.au/publications/biblio/export/xml/5833> [68] [https://www.bnhcrc.com.au/node/3390/generate-pdf?order=field\\_date\\_release&sort=asc](https://www.bnhcrc.com.au/node/3390/generate-pdf?order=field_date_release&sort=asc) [69] <https://www.bnhcrc.com.au/node/3390/generate-pdf?order=title&sort=asc> [70] <https://www.bnhcrc.com.au/resources/presentation-slideshow/3498> [71] <https://www.bnhcrc.com.au/file/7299/download?token=JLWEeLSU> [72] <https://www.bnhcrc.com.au/resources/presentation-slideshow/3754> [73] <https://www.bnhcrc.com.au/file/7566/download?token=j5f5rez9> [74] <https://www.bnhcrc.com.au/resources/fireaustralia-edition/3943> [75] <https://www.bnhcrc.com.au/file/7804/download?token=wmb8emre> [76] <https://www.bnhcrc.com.au/research/topics/child-centred> [77] <https://www.bnhcrc.com.au/research/topics/prescribed-burning> [78] <https://www.bnhcrc.com.au/research/topics/severe-weather> [79] <https://www.bnhcrc.com.au/resources/presentation-slideshow/4528> [80] <https://www.bnhcrc.com.au/file/8189/download?token=Elelet39> [81] <https://www.bnhcrc.com.au/research/topics/emergency-management> [82] <https://www.bnhcrc.com.au/resources/presentation-slideshow/8064> [83] <https://www.bnhcrc.com.au/file/10484/download?token=qdVLd4Pe> [84] <https://www.bnhcrc.com.au/casestudy/recoverycapitals> [85] <https://www.bnhcrc.com.au/hazardnotes/89> [86] <https://www.bnhcrc.com.au/file/12524/download?token=xYoITdq> [87] <https://www.bnhcrc.com.au/resources/presentation-audio-video/8171> [88] [https://www.bnhcrc.com.au/file/13110/download?token=Dw\\_FOg-Z](https://www.bnhcrc.com.au/file/13110/download?token=Dw_FOg-Z) [89] <https://www.bnhcrc.com.au/resources/presentation-audio-video/8177> [90] [https://www.bnhcrc.com.au/resources/presentation-audio-video/8182](https://www.bnhcrc.com.au/file/13123/download?token=kiVYJdlV) [92] <https://www.bnhcrc.com.au/file/13134/download?token=GIQBiSr> [93] <https://www.bnhcrc.com.au/research/topics/communication> [94]



<https://www.bnhcrc.com.au/research/topics/warnings> [95] <https://www.bnhcrc.com.au/resources/presentation-audio-video/8183> [96] <https://www.bnhcrc.com.au/file/13136/download?token=qJ5nqD-d> [97] <https://www.bnhcrc.com.au/communications-warnings-video-series> [98] <https://www.bnhcrc.com.au/resources/presentation-audio-video/8314> [99] <https://www.bnhcrc.com.au/file/13405/download?token=ws7d9zP0> [100] <https://www.bnhcrc.com.au/resources/presentation-audio-video/8315> [101] <https://www.bnhcrc.com.au/file/13407/download?token=QP8-5YBE> [102] <https://www.bnhcrc.com.au/resources/poster/3738> [103] <https://www.bnhcrc.com.au/resources/poster/7750>