



New South Wales Rural Fire Service [1]

[HTTP://WWW.RFS.NSW.GOV.AU/](http://www.rfs.nsw.gov.au/) [2]

The NSW Rural Fire Service has more than 70,000 volunteer members in 2100 brigades providing emergency services to over 95 percent of NSW.

Our people



[3]

David Boverman

[3]

END-USER



[4]

Steve Boverman

[4]

END-USER



[5]

Anthony Bradstreet

[5]

END-USER



[6]

Anthony Clark

[6]

END-USER



[7]

Simon Curry

[7]

END-USER



[8]

Brad Davies

[8]

END-USER



[9]

Shane Fitzsimmons
[9]
END-USER



[10]

Stephen Glassock
[10]
END-USER



[11]

Dr Saskia Grootemaat
[11]



[12]

Dr Simon Heemstra
[12]
END-USER



[13]

Jennifer Hollis
[13]



[14]

Susan Johnston
[14]
END-USER



[15]

Narelle Koteff
[15]
END-USER



[16]

Dr Stuart Matthews
[16]



[17]

Laurence McCoy
[17]
END-USER

[18]



Stuart Midgley
[18]
END-USER

[19]



Melissa O'Halloran
[19]
END-USER

[20]



Christine Roach
[20]
END-USER

[21]



Phil Robeson
[21]
END-USER

[22]



Patrick Schell
[22]
END-USER

[23]



Trina Schmidt
[23]
END-USER

[24]



Corey Shackleton
[24]
END-USER

[25]



Rebel Talbert
[25]
END-USER



[26]

Kristine Wendtman
[26]
END-USER



[27]

Dr Josh Whittaker
[27]
RESEARCHER



[28]

Steve Yorke
[28]
END-USER

End user representation

Urban planning for natural hazard mitigation [29]



[3]

David Boverman
[3]
END-USER

2017 NSW post-incident task force [30]



[5]

Anthony Bradstreet
[5]
END-USER

The Australian Natural Disaster Resilience Index: A system for assessing the resilience of Australian communities to natural hazards [31]



[5]

Anthony Bradstreet
[5]
END-USER

2018 Reedy Swamp fire post-incident task force [32]



[5]

Anthony Bradstreet
[5]
END-USER

Effective risk and warning communication during natural hazards [33]

[6]



Anthony Clark
[6]
END-USER

Improving the role of hazard communications in increasing residents' preparedness and response planning [34]

[6]



Anthony Clark
[6]
END-USER

Hazards, culture and Indigenous communities [35]

[7]



Simon Curry
[7]
END-USER

Fire spread prediction across fuel types [36]

[8]



Brad Davies
[8]
END-USER

[12]



Dr Simon Heemstra
[12]
END-USER

[16]



Dr Stuart Matthews
[16]

[37]

Fire surveillance and hazard mapping

[17]



Laurence McCoy
[17]
END-USER

[8]



Brad Davies
[8]
END-USER

[16]



Dr Stuart Matthews
[16]

dynamics [38]

Fire coalescence and mass spotfire

[8]



Brad Davies
[8]
END-USER

[12]



Dr Simon Heemstra
[12]
END-USER

Threshold conditions for extreme fire behaviour [39]

[8]



Brad Davies
[8]
END-USER

[12]



Dr Simon Heemstra
[12]
END-USER

October 2013 NSW post-incident task force [40]



[16]

Dr Stuart Matthews
[16]



[17]

Laurence McCoy
[17]
END-USER



[9]

Shane Fitzsimmons
[9]
END-USER



[10]

Stephen Glassock
[10]
END-USER



[28]

Steve Yorke
[28]
END-USER



[11]

Dr Saskia Grootemaat
[11]



[13]

Jennifer Hollis
[13]



[12]

Dr Simon Heemstra
[12]
END-USER

Catastrophic and cascading events:
planning and capability [41]

Predicting fire danger ratings from
physical measures of fire behaviour
[42]

Mapping bushfire hazard and impacts
[43]

Coupled fire-atmosphere modelling [44]

[16]



Dr Stuart Matthews
[16]

[12]



Dr Simon Heemstra
[12]
END-USER

Empirical analysis of spot-fire and ember behaviour during extreme fire weather conditions [45]

[17]



Laurence McCoy
[17]
END-USER

[12]



Dr Simon Heemstra
[12]
END-USER

Improved predictions of severe weather to reduce community impact [46]

[12]



Dr Simon Heemstra
[12]
END-USER

Mapping and understanding bushfire and natural hazard vulnerability and risks at the institutional scale [47]

[15]



Narelle Koteff
[15]
END-USER

Improving the retention and engagement of volunteers in emergency service agencies [48]

Improving land dryness measures and forecasts [49]



[22]

Patrick Schell
[22]
END-USER



[15]

Narelle Koteff
[15]
END-USER



[16]

Dr Stuart Matthews
[16]

An investigation of the dynamics of fire-fire interactions using a coupled fire-atmosphere model [50]



[16]

Dr Stuart Matthews
[16]

Modelling fire weather interactions using the ACCESS-Fire model [51]



[17]

Laurence McCoy
[17]
END-USER

Optimisation of fuel reduction burning regimes [52]



[19]

Melissa O'Halloran
[19]
END-USER

An analysis of building losses and human fatalities from natural disasters [53]



[19]

Melissa O'Halloran
[19]



[24]

Corey Shackleton
[24]

END-USER

END-USER

Using realistic disaster scenario analysis to understand natural hazard impacts and emergency management requirements [54]

[19]



Melissa O'Halloran
[19]
END-USER

[24]



Corey Shackleton
[24]
END-USER

From hectares to tailor made solutions for risk mitigation [55]

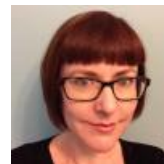
[19]



Melissa O'Halloran
[19]
END-USER

Policies, institutions and governance [56]

[20]



Christine Roach
[20]
END-USER

Improving decision-making in complex multi-team environments [57]

[21]



Phil Robeson
[21]
END-USER

Capability needs for emergency & disaster management organisations [58]

[21]



Phil Robeson
[21]
END-USER

Scientific diversity and uncertainty in risk mitigation policy and planning [59]

Positive mental health in young adult emergency services personnel [60]

[22]



Patrick Schell
[22]
END-USER

[23]



Trina Schmidt
[23]
END-USER

Natural hazard exposure information modelling framework [61]

[24]



Corey Shackleton
[24]
END-USER

Cost-effective mitigation strategy for flood prone buildings [62]

[24]



Corey Shackleton
[24]
END-USER

Diversity and inclusion: building strength and capability [63]

[25]



Rebel Talbert
[25]
END-USER

[26]



Kristine Wendtman
[26]
END-USER

Enabling sustainable emergency volunteering [64]

[26]



Kristine Wendtman

Out of uniform: building community resilience through non-traditional emergency volunteering [65]

[26]
END-USER



[26]

Kristine Wendtman
[26]
END-USER

Source URL:<https://www.bnhcrc.com.au/node/303/generate-pdf>

Links

[1] <https://www.bnhcrc.com.au/organisations/nswrfs> [2] <http://www.rfs.nsw.gov.au/> [3] <https://www.bnhcrc.com.au/people/dboverman> [4] <https://www.bnhcrc.com.au/people/sboverman> [5] <https://www.bnhcrc.com.au/people/abradstreet> [6] <https://www.bnhcrc.com.au/people/aclark> [7] <https://www.bnhcrc.com.au/people/scurry> [8] <https://www.bnhcrc.com.au/people/brdavies> [9] <https://www.bnhcrc.com.au/people/sfitzsimmons> [10] <https://www.bnhcrc.com.au/people/sglasscock> [11] <https://www.bnhcrc.com.au/people/saskia-grootemaat> [12] <https://www.bnhcrc.com.au/people/sheemstra> [13] <https://www.bnhcrc.com.au/people/jennifer-hollis> [14] <https://www.bnhcrc.com.au/people/sujohnston> [15] <https://www.bnhcrc.com.au/people/nkoteff> [16] <https://www.bnhcrc.com.au/people/smatthews> [17] <https://www.bnhcrc.com.au/people/lmccoy> [18] <https://www.bnhcrc.com.au/people/smidgeley> [19] <https://www.bnhcrc.com.au/people/mohalloran> [20] <https://www.bnhcrc.com.au/people/croach> [21] <https://www.bnhcrc.com.au/people/probeson> [22] <https://www.bnhcrc.com.au/people/pschell> [23] <https://www.bnhcrc.com.au/people/tschmidt> [24] <https://www.bnhcrc.com.au/people/cshackleton> [25] <https://www.bnhcrc.com.au/people/rtalbert> [26] <https://www.bnhcrc.com.au/people/kwendtman> [27] <https://www.bnhcrc.com.au/people/jwhittaker> [28] <https://www.bnhcrc.com.au/people/syorke> [29] <https://www.bnhcrc.com.au/research/urbanplanning> [30] <https://www.bnhcrc.com.au/research/resilience-hazards/3611> [31] <https://www.bnhcrc.com.au/research/resilienceindex> [32] <https://www.bnhcrc.com.au/research/resilience-hazards/4691> [33] <https://www.bnhcrc.com.au/research/riskcommunication> [34] <https://www.bnhcrc.com.au/research/residentpreparedness> [35] <https://www.bnhcrc.com.au/research/indigenouscommunities> [36] <https://www.bnhcrc.com.au/research/firespread> [37] <https://www.bnhcrc.com.au/research/firesurveillance> [38] <https://www.bnhcrc.com.au/research/firecoalescence> [39] <https://www.bnhcrc.com.au/research/extremefirebehaviour> [40] <https://www.bnhcrc.com.au/research/resilience-hazards/1740> [41] <https://www.bnhcrc.com.au/research/catastrophic> [42] <https://www.bnhcrc.com.au/research/understanding-and-mitigating-hazards/5331> [43] <https://www.bnhcrc.com.au/research/bushfireimpacts> [44] <https://www.bnhcrc.com.au/research/coupledfire> [45] <https://www.bnhcrc.com.au/research/understanding-and-mitigating-hazards/2286> [46] <https://www.bnhcrc.com.au/research/predictingsevereweather> [47] <https://www.bnhcrc.com.au/research/vulnerabilityandrisk> [48] <https://www.bnhcrc.com.au/research/volunteerretention> [49] <https://www.bnhcrc.com.au/research/landdryness> [50] <https://www.bnhcrc.com.au/research/understanding-and-mitigating-hazards/2290> [51] <https://www.bnhcrc.com.au/research/understanding-and-mitigating-hazards/7923> [52] <https://www.bnhcrc.com.au/research/fuelreduction> [53] <https://www.bnhcrc.com.au/research/buildinglosses> [54] <https://www.bnhcrc.com.au/research/disasterscenarioanalysis> [55] <https://www.bnhcrc.com.au/research/riskmitigationsolutions> [56] <https://www.bnhcrc.com.au/research/governance> [57] <https://www.bnhcrc.com.au/research/multiteamenvironments> [58] <https://www.bnhcrc.com.au/research/capabilityneeds> [59] <https://www.bnhcrc.com.au/research/scientificdiversity> [60] <https://www.bnhcrc.com.au/research/resilience-hazards/6884> [61] <https://www.bnhcrc.com.au/research/hazardexposure> [62] <https://www.bnhcrc.com.au/research/floodpronebuildings> [63] <https://www.bnhcrc.com.au/research/diversityinclusion> [64] <https://www.bnhcrc.com.au/research/resilience-hazards/3533> [65] <https://www.bnhcrc.com.au/research/communityresilience>