

# **| WARNING:**

**THIS PRESENTATION HAS IMAGES OF  
INDIVIDUALS WHO HAVE PASSED AWAY.**



# BNH Training for Remote North Australian Communities

Research advisory forum / March 2019

**Steve Sutton** / Charles Darwin University

**Dr Bev Sithole** / ARPNet CDU

**Otto Bulmaniya Campion** / ARPNet, ASRAC

**David Campbell** / Tigertail Australia

**Christine Brown** / ARPNet

**Hmalan Hunter-Xenie** / ARPNet / ANU

**Iolanthe Sutton** / SHIM Consulting



Jack Narwilil, Bininj Fire Man

 @bnhcrc  @bnhcrc



**Business**  
Cooperative Research  
Centres Programme

# The utilisation achieved so far and potential

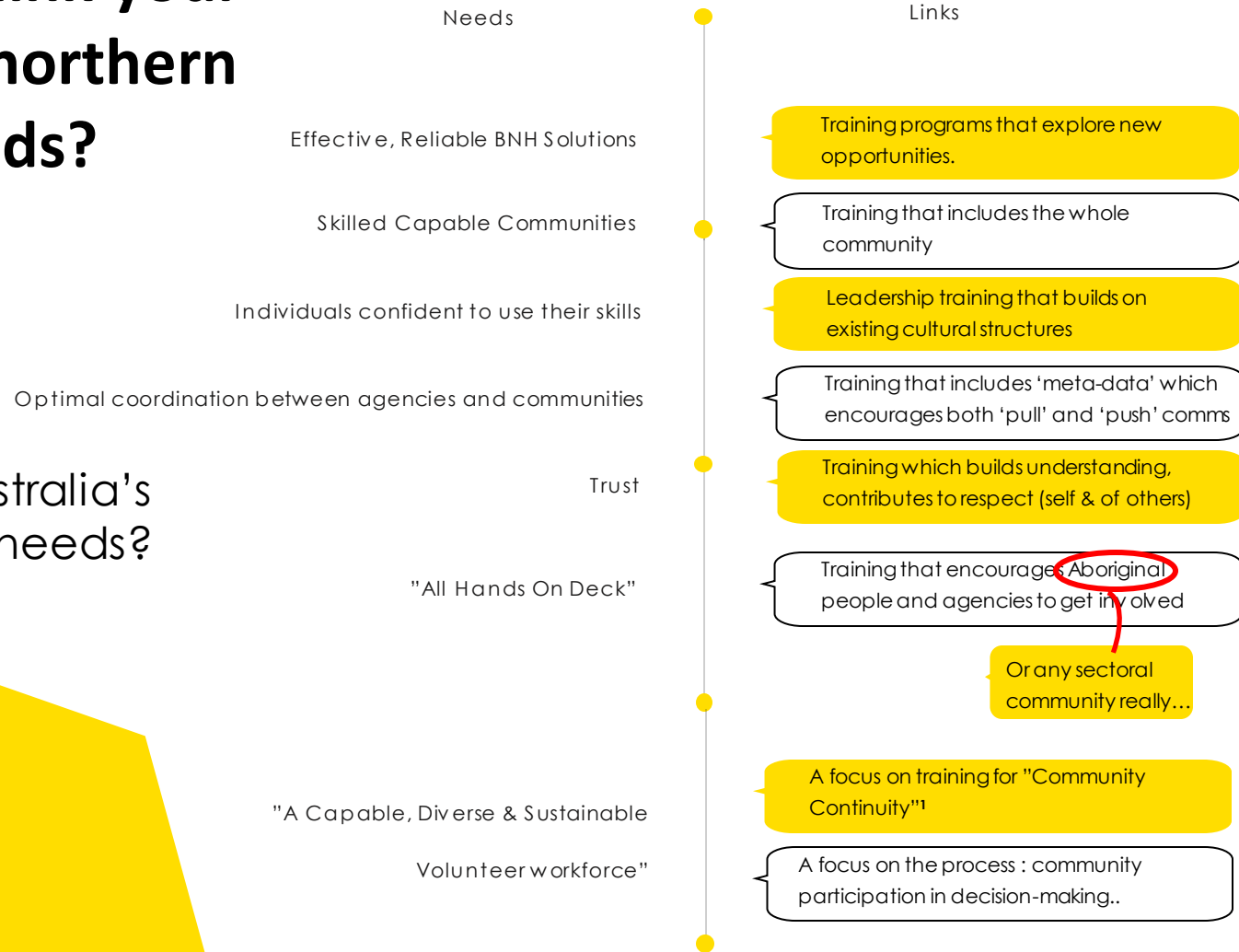


# A long journey...



# How best to link your work to meet northern Australia's needs?

What are ~~northern~~ Australia's needs?



1. Anne Leadbeater 2019