



Government of **Western Australia**
Department of **Fire & Emergency Services**
Office of Bushfire Risk Management



Developing Best Practice in WA

Tim McNaught
A/Director OBRM

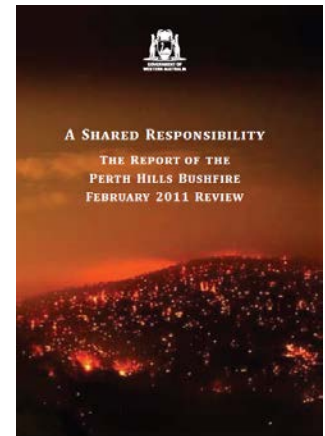
What can we learn from mythology?

- Icarus
 - His Dad warned him
 - They were pioneering new technology!
 - There were many unknown variables
 - Icarus knew best
 - Learned the sun was warm, the water hard
- What lessons does the myth teach us in a modern world?
- How might Icarus's maiden flight ended if he had documented standards on papyrus to guide his decisions?



Out of tragedy comes opportunity

- Two fires in 2011 demonstrated bushfire risk management in WA was inadequate
- Inquiries in 2011 - 'Shared Responsibility' and 'Appreciating the Risk' provide opportunities for Government
- State agencies evolution to align ISO31000
- OBRM born in May 2012



OBRM

Mission:

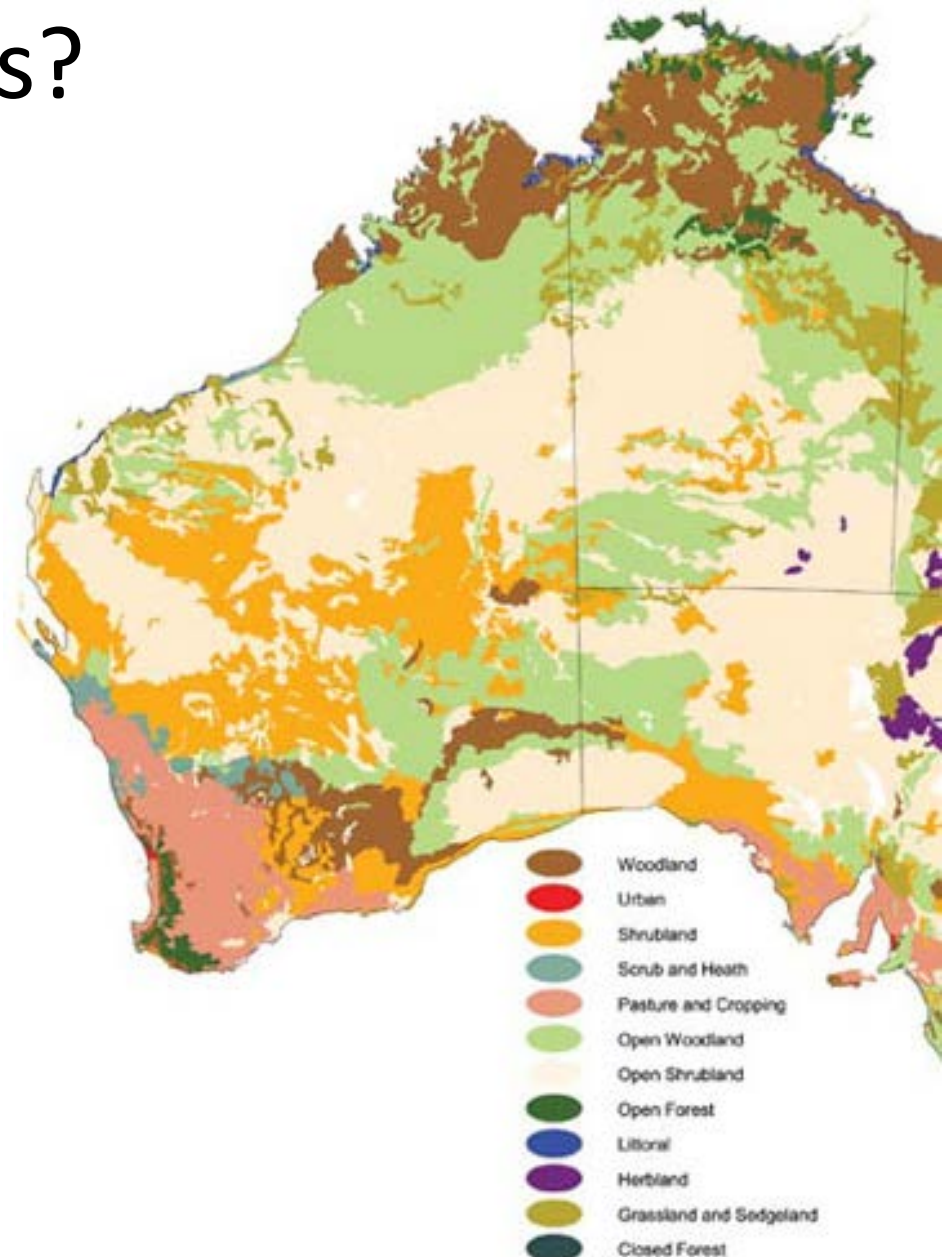
“To enhance the efficient and effective management of bushfire related risk in Western Australia in order to protect people, assets and other things valuable to communities”

Functions:

1. Set and approve bushfire risk related standards and policy
2. Monitor and assess agencies’ performance against standards
3. Report to the FES Commissioner
4. Communicate and promote best practice in bushfire risk management

What challenges?

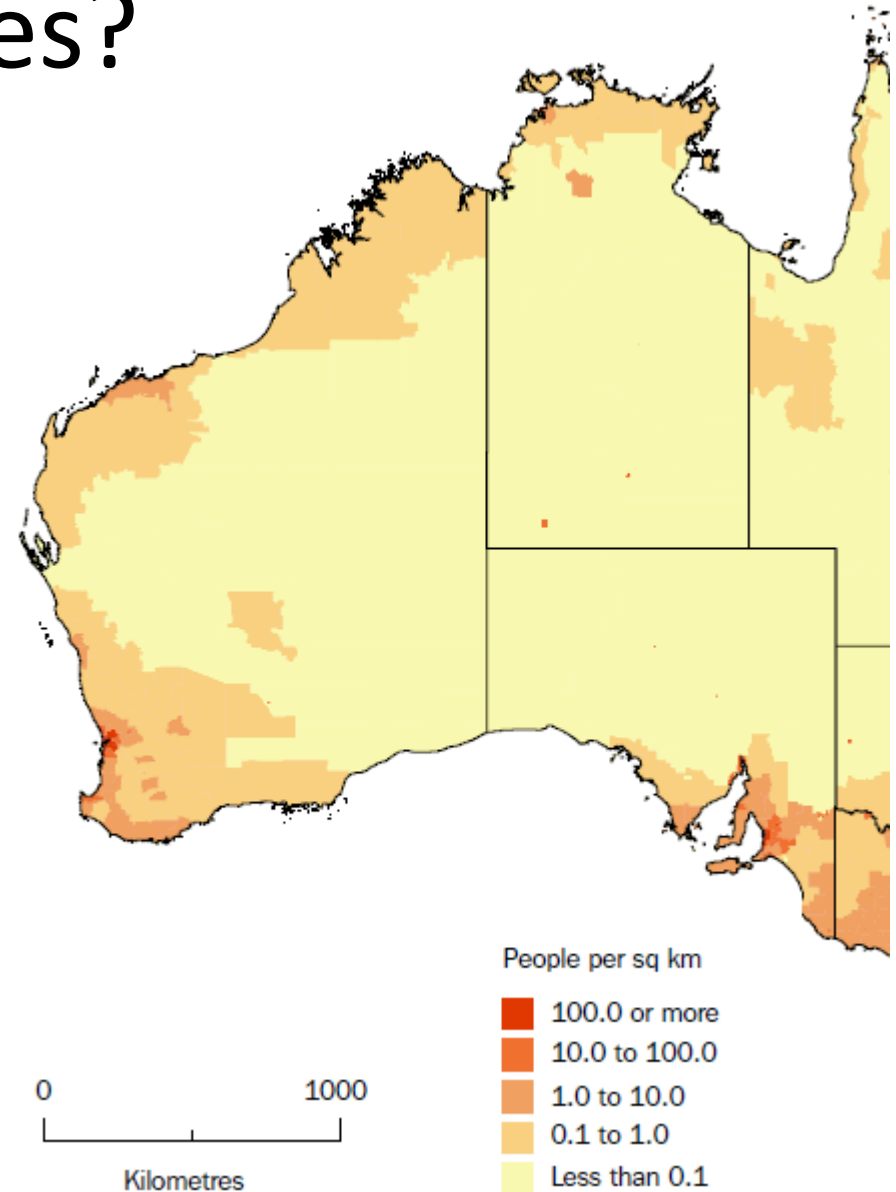
- Largest Australian state
 - 2.5million km² (33%)
 - ~ 2500km tip to tip
- Temperature and vegetation in the north, substantially different to the south



Source: ABS State of the Environment Report 2001

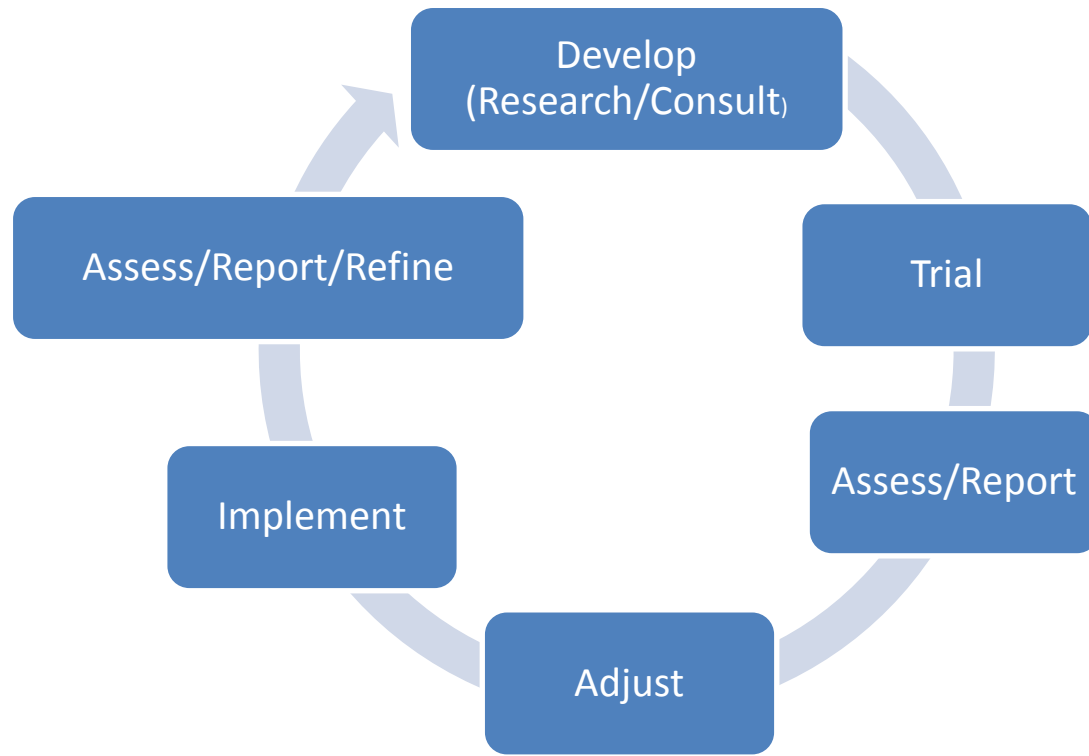
What challenges?

- Population base in the north differs to south
- Resources availability to support prescribed burning in north different to south



Source: ABS Regional Population Growth, Australia 2010

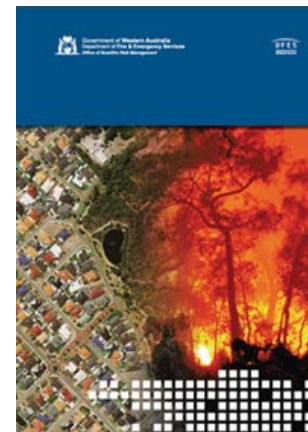
OBRMs Modus Operandi



- Sharing experiences, knowledge and developing standards that can apply to both local, regional and statewide
- If Icarus hadn't fallen to his death what would he have learned from a similar process?

OBRM's current projects

- Piloting a BRMP plan – 4 LGs
- Developing a Statewide BPA Map
- Finalising feedback from LG's following a pilot Permit to Burn Trial – 8 LGs, 2 seasons
- Conducting an Audit and Assurance Program across State Agencies with bushfire management responsibilities
- Supporting the development of regional best practices through collaborative processes
- Providing meaningful feedback into Legislative review processes and development of Statewide policy



Where to from here?

- Refinement of standards (LG permit, BPA, BRMP)
- Assessment against existing standards (DFES, DPaW)
- Supporting improvements in bushfire related land use planning (DoP)
- Supporting improvements in resource capacity and capability to manage bushfire risk (LG's, volunteers)
- Promoting best practice bushfire risk management (LGMA, LGs, newsletters, webpages)
- Developing collaborative mechanisms and structures to support knowledge sharing and access for public information on bushfire risk management



Office of Bushfire Risk Management

obrm@dfes.wa.gov.au

(08) 9395 9538