

An agency-based framework for community engagement for preparedness

Dr Kim Johnston¹, Dr Barbara Ryan², Professor Maureen Taylor³.

¹ Queensland University of Technology, ² University of Southern Queensland, ³ University of Technology Sydney

Introduction:

- Map preparedness community engagement approaches by Australian agencies and organisations.
- Develop a community competency index that allows consideration of particular contexts in developing CE plans.
- Develop a process to match techniques to the context.

Method:

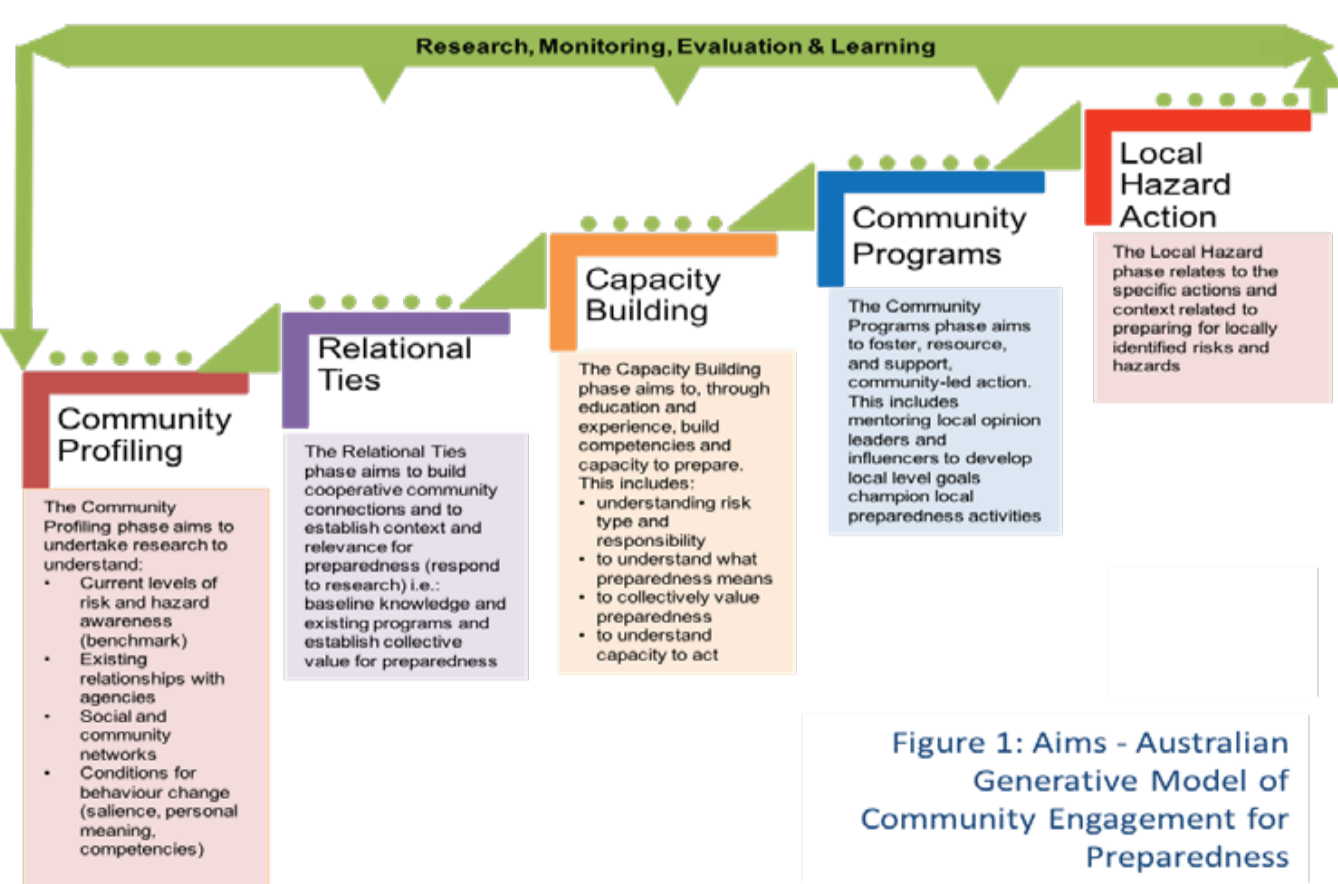
- Interviews with 30 agency/organisation CE practitioners.
- Review grey and peer literature of engagement techniques tested in EM.
- Review of resulting models in a series of practitioner workshops – making sure it's workable – changes made along the way.

Insights:

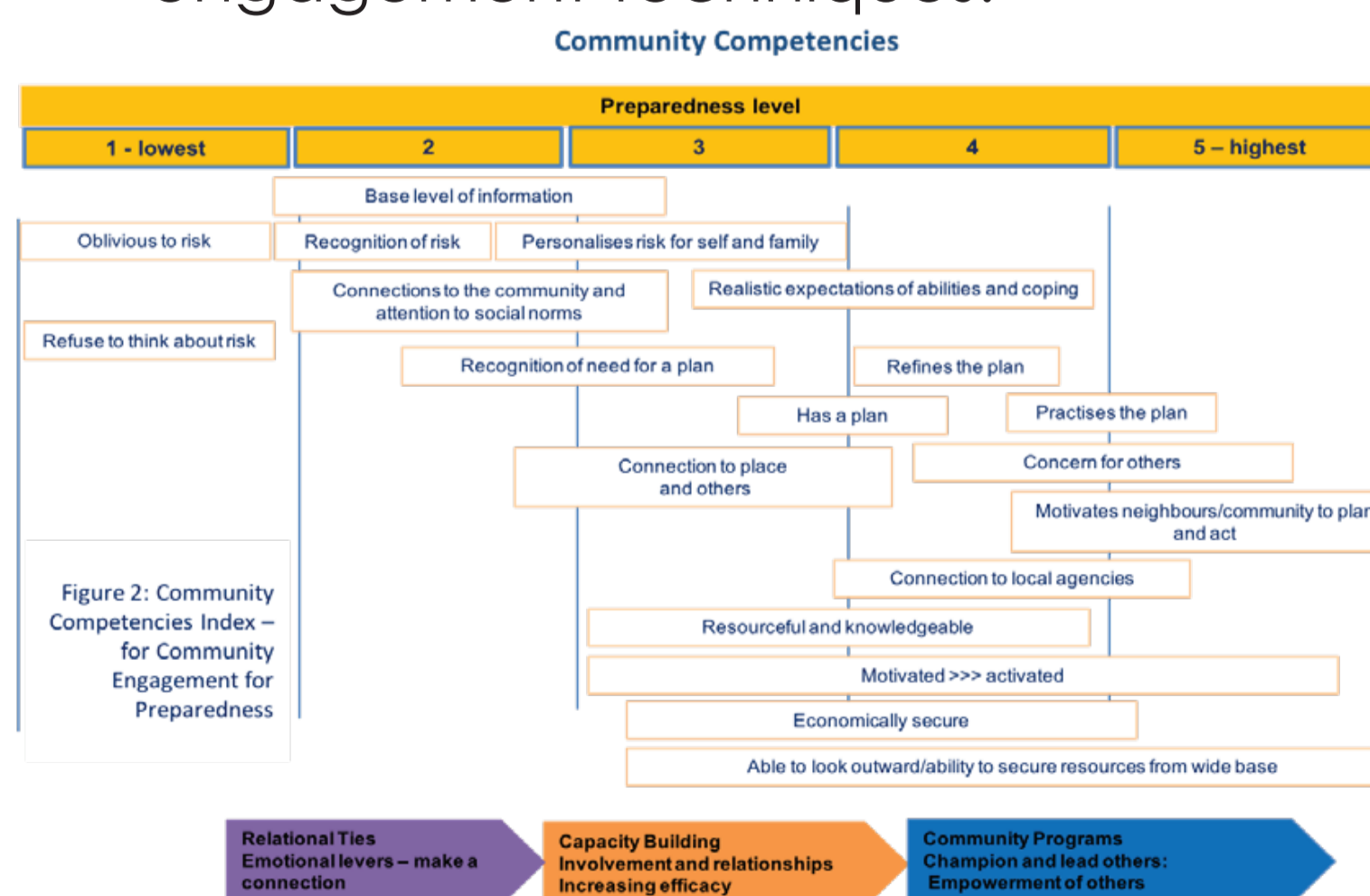
- The need to empower local communities to initiate, lead, tailor preparedness action - for sustainable engagement programs.
- Understanding community networks imperative.
- Not everyone can be shifted from apathy.
- Agency practice firmly based on tested frameworks – which they often adapt.
- No guides to applying frameworks, so agencies inventive. We mapped this in terms of context.

Outcomes:

- The Australian generative model of community engagement for preparedness.



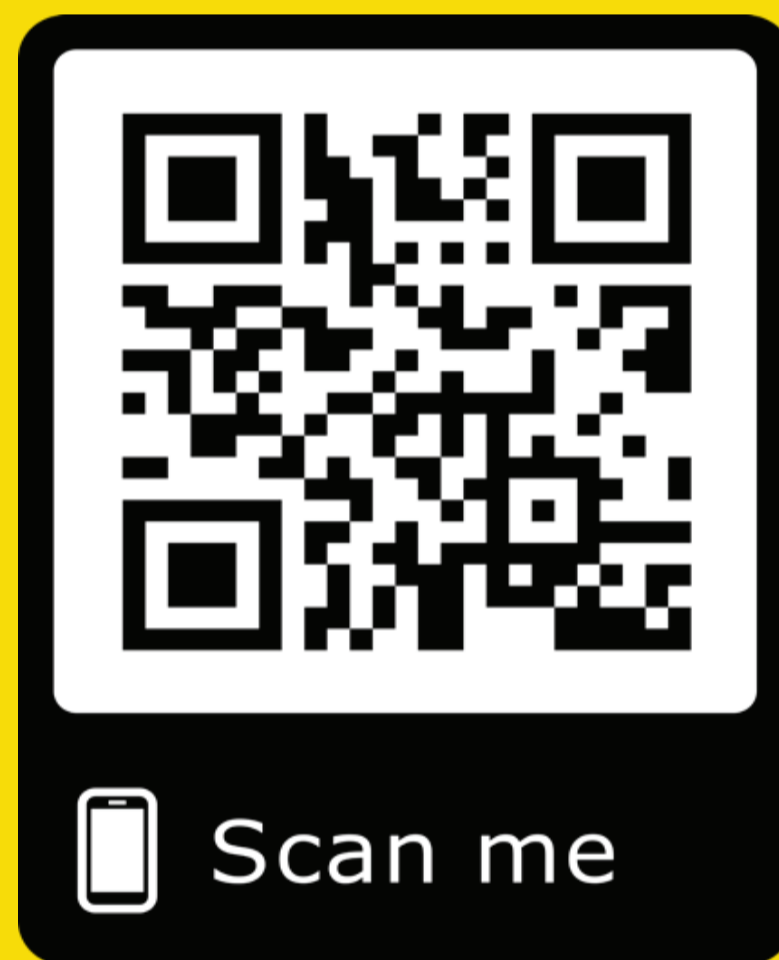
- A competency index to guide use of most effective engagement techniques.



Preparing for hazards

A generative process for...

- ✓ empowering communities to lead
- ✓ building and understanding capacity
- ✓ shared responsibility



Context is King

Monitoring and Evaluation...

- ✓ provides the foundation and structural support
- ✓ embeds measurement in engagement practice

- A Community Engagement Techniques toolkit (most of which have been empirically tested in EM, found in academic and grey literature).

- A Monitoring and Evaluation Toolkit from the community engagement/community development field.